

N I N T E N D O  
**NITRO**-System  
NITRO-Viewer

User's Manual

Version 1.7.1

**The contents in this document are highly  
confidential and should be handled accordingly.**

### **Confidential**

These coded instructions, statements, and computer programs contain proprietary information of Nintendo of America Inc. and/or Nintendo Company Ltd. and are protected by Federal copyright law. They may not be disclosed to third parties or copied or duplicated in any form, in whole or in part, without the prior written consent of Nintendo.

## Table of Contents

1	Introduction .....	5
2	Setup.....	6
2.1	NITRO-Viewer Package Contents .....	6
2.1.1	Software .....	6
2.1.2	Hardware.....	7
2.2	Installation .....	7
3	Function Description .....	8
3.1	2D Preview Function .....	8
3.2	3D Preview Function .....	8
3.3	Simultaneous 2D/3D Preview Function .....	8
4	Operation Description .....	9
4.1	NITRO-Viewer Startup .....	9
4.1.1	IS-NITRO-EMULATOR Hardware (Blue Box).....	9
4.1.2	NITRO Development Board .....	9
4.1.3	Nintendo DS.....	10
4.1.4	ensata .....	10
4.2	2D Preview Operation .....	10
4.3	3D Preview Operation .....	13
4.3.1	Screen Information.....	13
4.3.1.1	Operation Icons .....	14
4.3.1.2	Focal Point.....	14
4.3.1.3	Coordinate System .....	14
4.3.1.4	Light Object.....	14
4.3.1.5	Process Meter.....	14
4.3.1.6	Animation Bar .....	14
4.3.1.7	Projection Mapping Auxiliary Lines .....	15
4.3.1.8	Static Models .....	15
4.3.2	Working with 3D Preview .....	16
4.4	Simultaneous 2D/3D Preview Operation .....	17
5	Limitations .....	18
5.1	3D Preview .....	18
5.2	2D Preview .....	18
5.3	Hardware.....	18

## Figures

Figure 2-1 Overview .....	6
Figure 4-1 2D Preview Screen .....	12
Figure 4-2 3D Preview Screen .....	13
Figure 4-3 Display of a Static Model.....	15
Figure 4-3 Simultaneous 2D/3D Preview Screen .....	17

## Revision History

Version	Revision Date	Details of Revision
1.7.1	07/22/2005	<ul style="list-style-type: none"><li>Added an operating method for the automatic movement feature in 2D Preview.</li></ul>
1.7.0	06/20/2005	<ul style="list-style-type: none"><li>Added a resident model display feature.</li><li>Added a feature for swapping the icons that display depending upon the camera operations mode.</li></ul>
1.6.0	02/28/2005	<ul style="list-style-type: none"><li>Added a feature to operate 3D animations with DS keys.</li><li>Added support for the screen capture feature of 3D Material Editor.</li></ul>
1.5.0	01/31/2005	<ul style="list-style-type: none"><li>Deleted descriptions regarding TEG due to the discontinuation of TEG support.</li><li>Standardized the notation of NITRO to Nintendo DS.</li><li>Added support for environment mapping and projection mapping.</li><li>Added support for changing multiple materials.</li></ul>
1.4.0	12/13/2004	<ul style="list-style-type: none"><li>Added a note in Limitations about the display of the process meter and animation bar.</li></ul>
1.3.0	11/15/2004	<ul style="list-style-type: none"><li>Added cautions regarding 3D material editor versions.</li></ul>
1.2.0	10/06/2004	<ul style="list-style-type: none"><li>Added IS-NITRO-UIC support.</li></ul>
1.1.0	9/13/2004	<ul style="list-style-type: none"><li>Added ensata support.</li></ul>
1.0.0	9/2/2004	<ul style="list-style-type: none"><li>Added feature that switches between top and bottom screen.</li><li>Support for preview with NITRO-CHARACTER</li></ul>
0.9.1	8/17/204	<ul style="list-style-type: none"><li>Added animation bar and process meter.</li><li>Support for ima and ita animation preview.</li></ul>
0.9.0	8/2/2004	Initial release

# 1 Introduction

NITRO-Viewer is an application that aids data creation by transferring data from 3D Material Editor and NITRO-CHARACTER to the Nintendo DS to preview. The NITRO-Viewer package consists of the NITRO-Viewer, which operates on the Nintendo DS, and the NITRO-Viewer Controller, which controls how data is received and processed from the PC.

When hardware resources are appropriately allocated to NITRO-Viewer, 2D and 3D previews can be displayed simultaneously on the screen of the Nintendo DS.

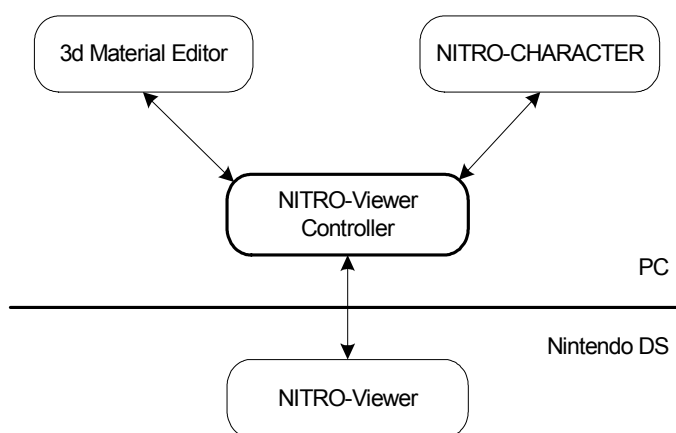
The following chapters describe NITRO-Viewer and its use.

## 2 Setup

### 2.1 NITRO-Viewer Package Contents

The NITRO-Viewer package consists of the following products.

**Figure 2-1 Overview**



#### 2.1.1 Software

- **NITRO-Viewer**  
A preview program that operates on the Nintendo DS.
- **NITRO-Viewer Controller**  
The NITRO-Viewer Controller receives and transfers data between the PC and NITRO-Viewer, as well as performing data operations.
- **Other Supported Applications**  
These include applications such as 3D Material Editor and NITRO-CHARACTER. Data previews can be displayed using the NITRO-Viewer Controller.
- **ensata**  
ensata is the Nintendo DS software emulator. It is not needed when operating on the Nintendo DS. This software is necessary when there is no Nintendo DS.

### 2.1.2 Hardware

---

To use the NITRO-Viewer on Nintendo DS, one of the following development devices must be connected to the PC.

- IS-NITRO-EMULATOR Hardware (blue box)
- A NITRO development board (TS version) connected to IS-CGB/AGB-EMULATOR or IS-NITRO-EMULATOR hardware
- A Nintendo DS system which is connected to the IS-NITRO-UIC and the Nintendo DS Development Flash Card

## 2.2 Installation

---

Use the following procedure to install and perform the initial configuration of NITRO-Viewer.

(1) File expansion

Expand the NITRO-Viewer archive to an appropriate folder on the PC.

(2) Environment variable settings

To use NITRO-Viewer, the environment variables need to be set. Run

`setup\setViewerRootEnv.wsf` (located in the expanded folder) to set the required environment variables. You should run this program only when first setting up NITRO-Viewer.

However, you will need to run this program again if you change the location of the NITRO-Viewer folder on your PC.

This completes the setup of NITRO-Viewer.

To uninstall, run `setup\removeViewerRootEnv.wsf` to delete the environment variables, and then delete the folder.

## 3 Function Description

### 3.1 2D Preview Function

---

This function allows you to preview animation data, cells, and backgrounds on a Nintendo DS system while they are being created with NITRO-CHARACTER. Operations such as scrolling, moving, rotating, and scaling can be carried out on the display objects using the Nintendo DS system Controller. In addition, each frame of each operations target can be moved automatically in a fixed direction (up, down, left, and right).

Refer to the NITRO-CHARACTER manual for more details on the 2D preview functions.

### 3.2 3D Preview Function

---

This function allows you to preview model and animation data on a Nintendo DS system while it is being created with 3D Material Editor. In addition to camera position, vector, and light vector functions executed by the Nintendo DS system Controller, a variety of settings can be made in 3D Material Editor to effect the data display on the Nintendo DS system.

Refer to the 3D Material Editor manual for more details on the 3D preview functions.

**Caution:** To allow 3D preview using this version of NITRO-Viewer, use version 2.7.0 (02/28/2005) or later of 3D Material Editor. Versions prior to 2.7.0 will not preview properly.

### 3.3 Simultaneous 2D/3D Preview Function

---

This function allows you to preview both 2D and 3D data on the NITRO machine at the same time.

You can allocate VRAM between 2D and 3D using the NITRO-Viewer Controller.

Be aware that the desired display may not result if you have not properly allocated VRAM.

For further details about Simultaneous 2D/3D Preview function, refer to the NITRO-Viewer Controller manual.

**Note:**

- Simultaneous preview mode is not supported in NITRO-CHARACTER Version 1.0x.
- We plan to support it starting with Version 1.1.
- If Simultaneous 2D/3D Preview is enabled when VRAM is not set appropriately, textures and 2D objects may not be displayed in whole or be displayed corrupted.



## 4 Operation Description

This section describes how to operate NITRO-Viewer.

### 4.1 NITRO-Viewer Startup

---

There are multiple ways to start up the NITRO-Viewer depending on the configuration of the connected hardware. Select one of the following methods appropriate for your hardware configuration.

#### 4.1.1 IS-NITRO-EMULATOR Hardware (Blue Box)

---

- (1) Verify that the IS-NITRO-EMULATOR hardware it is correctly connected to the PC. If other applications connected to the IS-NITRO-EMULATOR hardware are running, exit those applications before proceeding.
- (2) Start NITRO-Viewer Controller from the PC. Run the shortcut named  
`TS_NITRO-Viewer_Controller`
- (3) Start up the supported application and connect to NITRO-Viewer.

#### 4.1.2 NITRO Development Board

---

- (1) Verify that the NITRO development board is connected properly to the PC. If other applications connected to the NITRO development board are running, exit those applications before proceeding.
  - (2) Start NITRO-Viewer Controller from the PC.
    - If you are using the TS version (dual-screen device\*), run the shortcut named  
`TS_NITRO-Viewer_Controller`.
- \* If the device is not a dual-screen device, then NITRO-Viewer does not start properly.
- (3) Start up the supported application and connect to NITRO-Viewer.

---

### 4.1.3 Nintendo DS

---

- (1) To run NITRO-Viewer on a Nintendo DS, the NITRO-Viewer program must first be loaded to the Nintendo DS Development Flash Card. The NITRO-Viewer program file to be loaded is `nitro\TS\viewer.srl` located in the NITRO-Viewer folder.
- (2) Verify that the Nintendo DS is connected to the PC via the IS-NITRO-UIC. If other applications connected to the Nintendo DS are running, exit those applications before proceeding.
- (3) Start NITRO-Viewer Controller from the PC. Run the shortcut named `UIC_NITRO-Viewer_Controller`.
- (4) Start up the supported application and connect to NITRO-Viewer.

---

### 4.1.4 ensata

---

- (1) When starting with ensata, it is not necessary to start ensata beforehand. However, if ensata has never been started before, start up and quit ensata once.
- (2) Start NITRO-Viewer Controller from the PC. Run the shortcut named `ensata_NITRO-Viewer_Controller`.
- (3) Start up the supported application and connect to NITRO-Viewer.

---

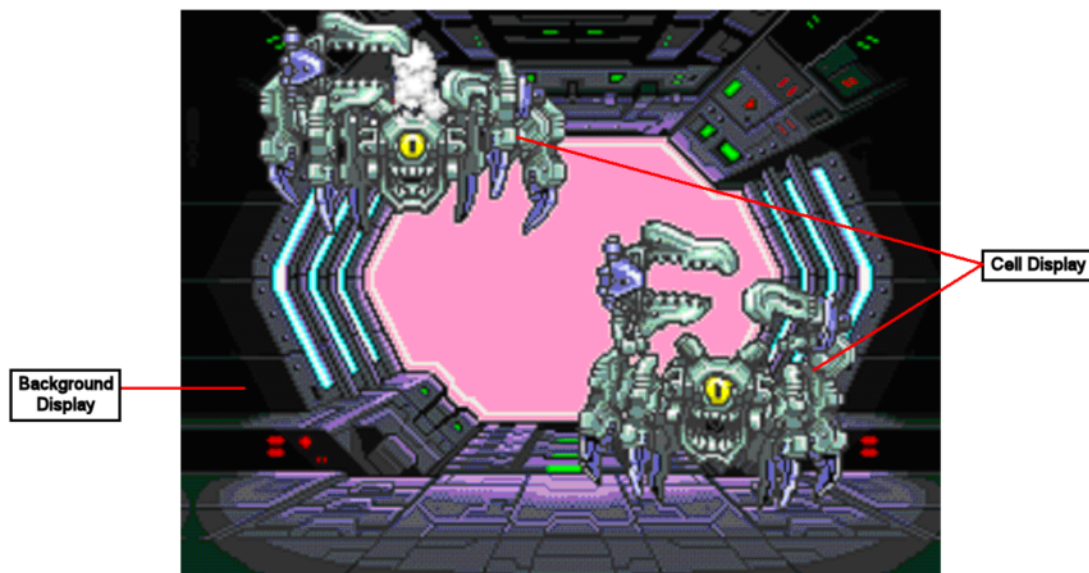
## 4.2 2D Preview Operation

---

In 2D preview, the Nintendo DS System Controller can be used to move, scroll, rotate, scale, and adjust the automatic movement speed of backgrounds and cells. The following table describes 2D preview operations.

Operation	Description
SELECT	Resets the movement value and animation in the preview display. This operation takes priority over all other operations.
L Button	Changes the focus (the target on which operations are performed). Pressing the L Button successively rotates the focus from cell 0 to cell 1, cell 2...BG0, BG1, BG2, BG3 and then back to cell 0. Hidden objects do not receive focus.
+Control Pad	Moves the cell or BG with focus up, down, left, or right.
R Button& +Control Pad (Left/Right)	Rotates the cell or BG with focus. Note that only BG2 and BG3 can be rotated or scaled.
R Button& +Control Pad (Up/Down)	Scales the cell or BG with focus.
A Button	Holding down the A button while performing an operation causes that operation to be applied to all cells. The A Button& +Control Pad move all cells. The A Button& R Button& +Control Pad rotate and scale all cells.
B Button	Holding down the B button while performing an operation causes that operation to work on all backgrounds. The B Button& +Control Pad move all backgrounds. The B Button& R Button& +Control Pad rotate and scale all backgrounds capable of those respective actions. <b>Note:</b> Only BG2 and BG3 can be rotated or scaled.
X and Y Buttons	By operating the +Control Pad while holding down the X button or the Y button, you can adjust the automatic movement speed of the operations target. Pressing the +Control Pad in the same direction as the current automatic movement direction will speed it up, while pressing in the opposite direction will slow it down. <b>Note:</b> Key repeat does not function while performing this operation.
L Button& SELECT	Switches preview between the top and bottom screen.

Figure 4-1 2D Preview Screen

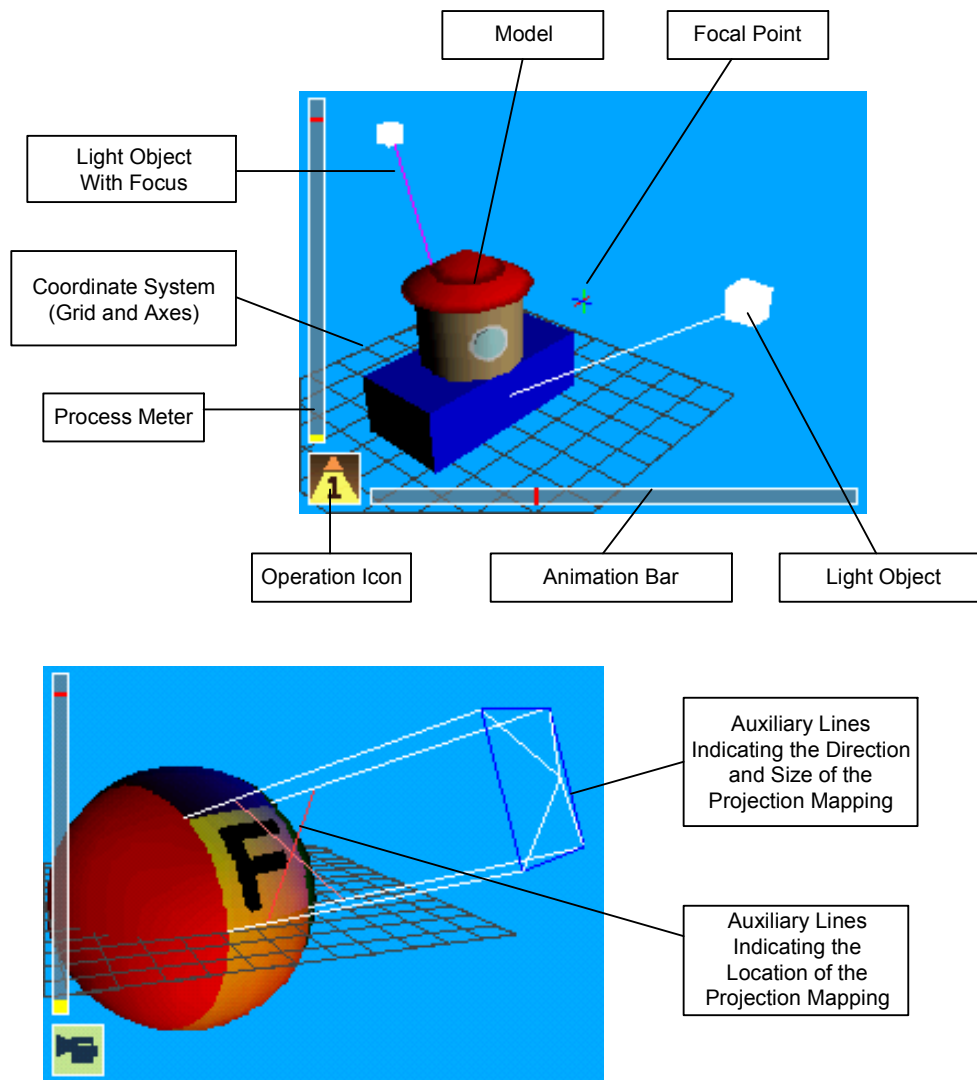


## 4.3 3D Preview Operation

### 4.3.1 Screen Information




3D preview displays a variety of information in addition to model data. The types of information displayed can be selected using the settings in 3D Material Editor.

**Figure 4-2 3D Preview Screen**



#### 4.3.1.1 Operation Icons

The Operation Icon indicates the operational mode that is active.

Icon	Description
 Camera Operation Mode	This icon indicates the mode when the 3D camera is activated. The camera operates in both rotational movement mode and translation mode, and the icon changes according to the operation mode.
 Light Operation Mode	This icon indicates the mode when lights are activated. The number in the light icon indicates which light (0 to 3) has the focus.
 2D Operation Mode	This icon indicates the mode when the 2D screen is activated. This icon is displayed only in Simultaneous 2D/3D Preview mode and does not appear in either regular 3D or 2D preview mode.

#### 4.3.1.2 Focal Point

The focal point indicates the coordinates of the center point of the camera's line of vision.

#### 4.3.1.3 Coordinate System

The coordinate system displays a grid or coordinate axes so that the orientation and size of the model data are more easily depicted. The selection of the coordinate system type as well as the size and gridline increments can be set from the 3D Material Editor. Refer to the 3D Material Editor manual for further details.

#### 4.3.1.4 Light Object

The light object visually represents the set light colors and vectors with a cube.

The color of the line of the light with focus is changed for easy identification. Although the distance from the center point and size of these light objects can be changed, those changes are only to make visual recognition easier. The actual lighting effects are not changed.

#### 4.3.1.5 Process Meter

The process meter displays the CPU processing time that is consumed by rendering a 3D model or a 3D animation. The red line indicates the total CPU processing time for one frame. The meter will not be displayed if the model to be displayed is not loaded.

**Note:** The process meter is not displayed when Y sorting of translucent polygons is set to auto sort mode.

#### 4.3.1.6 Animation Bar

The animation bar displays the currently displayed frame in a 3D animation. The animation bar will not be displayed if an animation file is not loaded.

**Note:** The animation bar is not displayed when Y sorting of translucent polygons is set to auto sort mode.

#### 4.3.1.7 Projection Mapping Auxiliary Lines

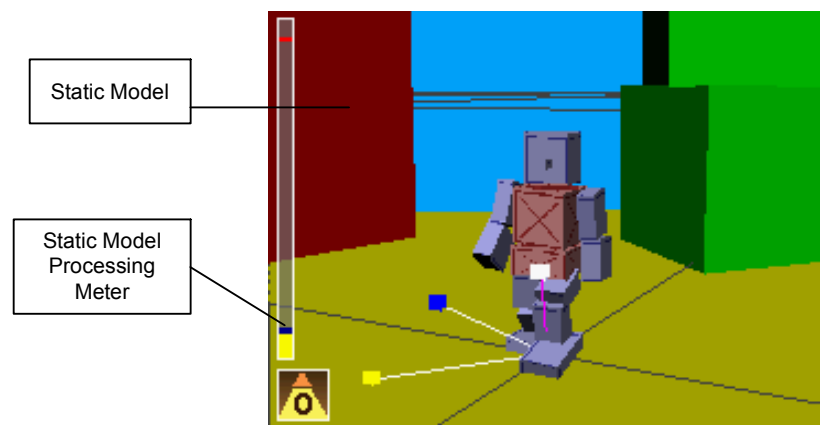
When the projection mapping is set in 3D Material Editor, auxiliary lines are displayed to show the location, direction, and size.

The auxiliary lines are displayed only while the setting dialog box for projection mapping is open in 3D Material Editor, and the length of the auxiliary lines depends on the size set for the coordinate system (grid/coordinate axes).

#### 4.3.1.8 Static Models

In versions 2.8.0 and later of the 3D Material Editor, there is a feature that displays static models other than those being edited. Even when static models are set to “hide”, the textures are stored in VRAM, so if many static models are stored, textures may not be displayed correctly. The CPU processing time used for rendering static models is displayed on the processing meter as a different color.

**Figure 4-3 Display of a Static Model**



### 4.3.2 Working with 3D Preview

You can use the Nintendo DS system Controller to operate the camera and lights.

The following table explains how to use the 3D preview.

#### Camera Operation Mode

Operation	Description
SELECT	Resets the camera to the last state set by the PC.
L Button	Switches the operation mode. Pressing the L Button successively cycles through the following operation modes: camera, light 0, light 1, light 2, light 3, and then back to the camera. Hidden lights do not receive focus.
+Control Pad	Rotates the camera around the focal point. The Left/Right buttons rotate the camera horizontally about the Y axis, and the Up/Down buttons rotate the camera vertically around the X axis. The focal point position does not change.
R Button & +Control Pad	Moves the camera and focal point horizontally along the XZ plane. The movement speed is proportional to the distance between the focal point and the camera.
A Button	Moves the camera away from the focal point. The focal point coordinates do not change.
B Button	Moves the camera towards the focal point. The focal point coordinates do not change.
X Button	Moves the camera and focal point vertically along the positive Y axis. The movement speed is proportional to the distance between the focal point and the camera.
Y Button	Moves the camera and focal point vertically along the negative Y axis. The movement speed is proportional to the distance between the focal point and the camera.
L button & SELECT	Switches preview between the top and bottom screen.

#### Light Operation Mode

Operation	Description
SELECT	Switches the operation mode to camera operation mode, and resets the camera to the last state set by the PC.
L Button	Switches the operation mode. Pressing the L Button successively rotates the operation mode from the camera to light 0, light 1, light 2, light 3 and then back to the camera. Hidden lights do not receive focus.
+Control Pad	Rotates the light vector. +Control Pad Left/Right buttons rotate the light horizontally along the Y axis, and the Up/Down buttons vertically rotate.
A Button	Increases the size of the light object, and the display position moves away from the center point. The actual lighting effects do not change.
B Button	Decreases the size of the light object, and the display position moves toward the center point. The actual lighting effects do not change.
L Button & SELECT	Switches preview between the top and bottom screen.



### Animation Operation (Common to Camera Operation Mode and Light Operation Mode)

If the animation has been set, it can be operated by holding down the R Button and pressing other buttons. The settings for amount of frame change and loop playback are based on the settings in 3D Material Editor.

Operation	Description
R Button & A Button	Starts and stops the animation playback.
R Button & B Button	Starts and stops the animation reverse playback.
R Button & X Button	Advances the current frame by the amount of frame change. The amount of frame change is based on the settings in 3D Material Editor.
R Button & Y Button	Rewinds the current frame by the amount of frame change. The amount of frame change is based on the settings in 3D Material Editor.
R Button & SELECT	Returns the current frame to the start frame.
R Button & START	Advances the current frame to the end frame.

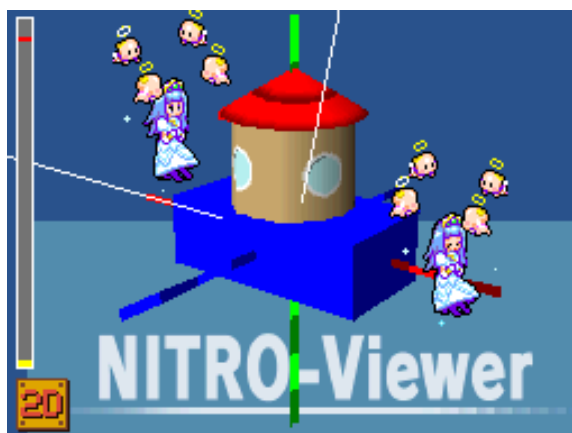
## 4.4 Simultaneous 2D/3D Preview Operation

In addition to the operations possible with regular 2D Operation and 3D Operation modes, Simultaneous 2D/3D Preview allows the user to switch between the 2D Operation and 3D Operation.

Other operations work identically to those in the individual 2D and 3D preview modes.

Operation	Description
START	Switches between 2D and 3D operation
Other buttons	Refer to the 2D and 3D preview operation instructions.

Figure 4-4 Simultaneous 2D/3D Preview Screen



## 5 Limitations

Some functions have limitations in the current version. These are described below.

### 5.1 3D Preview

ST component specification for the material texture conversion matrix	Support to specify the ST value in the material data is not yet provided. The ST value in the polygon data is used throughout.
Animation	Linear interpolation for fractional frames is not supported for ima or ita data. Even if the source animation data is configured with linear interpolation of fractional frames ( <code>interpolation = linear</code> ), fractional frames are discarded and only whole frames are played.
Display of animation bar and process meter	The setting for Y sorting of translucent polygons is supported in versions 2.5.0 and later of 3D Material Editor. However, the animation bar and process meter are not displayed while 3D Material Editor is set to auto sort mode

### 5.2 2D Preview

Support for NITRO-CHARACTER	NITRO-CHARACTER Version 1.0x does not support Simultaneous 2D/3D Preview. Version 1.1 and later support this feature..
-----------------------------	--

### 5.3 Hardware

IS CGB EMULATOR operation	The support for TEG board was discontinued from NITRO-Viewer Version 1.5.0, so it does not operate on IS-CGB-EMULATOR. To operate with IS-CGB-EMULATOR, use NITRO-Viewer Version 1.4.0 or earlier.
---------------------------	---

This converter uses software developed by the Apache Software Foundation (<http://www.apache.org/>).

The Apache Software License, Version 1.1

Copyright (c) 1999 The Apache Software Foundation. All rights reserved.

Redistribution and use in source and binary forms, with or without modification, are permitted provided that the following conditions are met:

1. Redistributions of source code must retain the above copyright notice, this list of conditions and the following disclaimer.
2. Redistributions in binary form must reproduce the above copyright notice, this list of conditions and the following disclaimer in the documentation and/or other materials provided with the distribution.
3. The end-user documentation included with the redistribution, if any, must include the following acknowledgment:  
"This product includes software developed by the Apache Software Foundation (<http://www.apache.org/>)."  
Alternately, this acknowledgment may appear in the software itself,  
if and wherever such third-party acknowledgments normally appear.
4. The names "Xerces" and "Apache Software Foundation" must not be used to endorse or promote products derived from this software without prior written permission. For written permission, please contact [apache@apache.org](mailto:apache@apache.org).
5. Products derived from this software may not be called "Apache", nor may "Apache" appear in their name, without prior written permission of the Apache Software Foundation.

THIS SOFTWARE IS PROVIDED ``AS IS" AND ANY EXPRESSED OR IMPLIED WARRANTIES, INCLUDING, BUT NOT LIMITED TO, THE IMPLIED WARRANTIES OF MERCHANTABILITY AND FITNESS FOR A PARTICULAR PURPOSE ARE DISCLAIMED. IN NO EVENT SHALL THE APACHE SOFTWARE FOUNDATION OR ITS CONTRIBUTORS BE LIABLE FOR ANY DIRECT, INDIRECT, INCIDENTAL, SPECIAL, EXEMPLARY, OR CONSEQUENTIAL DAMAGES (INCLUDING, BUT NOT LIMITED TO, PROCUREMENT OF SUBSTITUTE GOODS OR SERVICES; LOSS OF USE, DATA, OR PROFITS; OR BUSINESS INTERRUPTION) HOWEVER CAUSED AND ON ANY THEORY OF LIABILITY, WHETHER IN CONTRACT, STRICT LIABILITY, OR TORT (INCLUDING NEGLIGENCE OR OTHERWISE) ARISING IN ANY WAY OUT OF THE USE OF THIS SOFTWARE, EVEN IF ADVISED OF THE POSSIBILITY OF SUCH DAMAGE.

=====

This software consists of voluntary contributions made by many individuals on behalf of the Apache Software Foundation and was originally based on software copyright (c) 1999,

International Business Machines, Inc., <http://www.ibm.com>.

For more, information on the Apache Software Foundation, please see [<http://www.apache.org/>](http://www.apache.org/).

Windows is a registered trademark or a trademark of Microsoft Corporation in the United States and other countries.

Other company names, product names, etc., are registered trademarks or trademarks of their respective companies.

© 2004-2005 Nintendo

The contents of this document cannot be duplicated, copied, reprinted, transferred, distributed or loaned in whole or in part without the prior approval of Nintendo Co. Ltd.