

# IS-TWL-DEBUGGER

## Setup Manual

INTELLIGENT SYSTEMS CO.,LTD.

2008/10/20

**The content of this document is highly confidential  
and should be handled accordingly.**

**Confidential**

These coded instructions, statements, and computer programs contain proprietary information of Nintendo and/or its licensed developers and are protected by national and international copyright laws. They may not be disclosed to third parties or copied or duplicated in any form, in whole or in part, without the prior written consent of Nintendo.

## Contents

---

1	Using This Product Safely.....	4
2	Special Notes.....	7
2.1	Notes.....	7
2.2	End-of-Life Equipment Disposal .....	7
3	Operation Environment.....	9
3.1	Requirements.....	9
3.2	About USB 2.0 .....	9
4	Setup.....	10
4.1	Connections .....	10
4.2	Turning the Power On and Off .....	12
4.3	Installing Device Drivers .....	12
4.4	Installing IS-TWL-DEBUGGER.....	14
4.5	Uninstalling IS-TWL-DEBUGGER .....	14
5	Support .....	16

## Tables

---

Table 3-1	Operation Environment Requirements for IS-TWL-DEBUGGER .....	9
Table 4-1	Setup Procedure for the IS-TWL-DEBUGGER Hardware .....	10

## Figures

---

Figure 2-1	Disposal Symbol .....	8
Figure 4-1	Found New Hardware Wizard: Welcome Dialog Box .....	12
Figure 4-2	Found New Hardware Wizard: Installation Dialog Box.....	13
Figure 4-3	Found New Hardware Wizard: Compatibility Dialog Box .....	13
Figure 4-4	Found New Hardware Wizard: Completion Dialog Box.....	14

# 1 Using This Product Safely

To use IS-TWL-DEBUGGER safely and ensure the unit does not malfunction and possibly cause a safety hazard, please read the following items carefully .

- Do not modify the unit or take it apart.
- If you notice a problem, immediately stop using the unit.
- Do not allow liquids or foreign objects to enter the unit.
- Do not store the unit in a humid or dusty location.
- Never cover the unit or block ventilation.
- Do not bend, pull, or twist the cables.
- Do not subject the unit to strong impact.
- Do not use the unit in locations where the temperature is below 0°C or above 40°C.
- Do not use the unit during an electrical storm.

## **Regulatory Statement**

- This equipment has been tested and found to comply with the limits for a Class A digital device, pursuant to Part 15 of the FCC Rules. These limits are designed to provide reasonable protection against harmful interference when the equipment is operated in a commercial environment.
- This equipment generates, uses, and can radiate radio frequency energy and, if not installed and used in accordance with the instructions, may cause harmful interference to radio communications.
- Operation of this equipment in a residential area is likely to cause harmful interference, in which case users will be required to correct the interference at their own expense.
- This equipment complies with FCC radiation exposure limits for an uncontrolled environment.
- This equipment should be installed and operated with a minimum distance of 20 cm between the radio frequency energy radiator and body. This transmitter must not be co-located or operating in conjunction with any antenna or transmitter.
- This Class A digital apparatus complies with Canadian ICES-003. The term "IC" before the equipment certification number only signifies that the Industry Canada technical specifications were met.

Cet appareil numérique de la classe A est conforme à la norme NMB-003 du Canada.

Le terme "IC" avant le numéro d'homologation ne signifie seulement que les normes d'Industrie Canada ont été respectées.

English	Hereby, INTELLIGENT SYSTEMS CO.,LTD. declares that this IS-TWL-DEBUGGER is in compliance with the essential requirements and other relevant provisions of Directive 1999/5/EC.
Finnish	INTELLIGENT SYSTEMS CO.,LTD. vakuuttaa täten että IS-TWL-DEBUGGER tyyppinen laite on direktiivin 1999/5/EY oleellisten vaatimusten ja sitä koskevien direktiivin muiden ehtojen mukainen.
Dutch	Hierbij verklaart INTELLIGENT SYSTEMS CO.,LTD. dat het toestel IS-TWL-DEBUGGER in overeenstemming is met de essentiële eisen en de andere relevante bepalingen van richtlijn 1999/5/EG.
	Bij deze verklaart INTELLIGENT SYSTEMS CO.,LTD. dat deze IS-TWL-DEBUGGER voldoet aan de essentiële eisen en aan de overige relevante bepalingen van Richtlijn 1999/5/EC.
French	Par la présente INTELLIGENT SYSTEMS CO.,LTD. déclare que l'appareil IS-TWL-DEBUGGER est conforme aux exigences essentielles et aux autres dispositions pertinentes de la directive 1999/5/CE.
	Par la présente, INTELLIGENT SYSTEMS CO.,LTD. déclare que IS-TWL-DEBUGGER est conforme aux exigences essentielles et aux autres dispositions de la directive 1999/5/CE qui lui sont applicables.
Swedish	Härmed intygar INTELLIGENT SYSTEMS CO.,LTD. att denna IS-TWL-DEBUGGER står i överensstämmelse med de väsentliga egenskapskrav och övriga relevanta bestämmelser som framgår av direktiv 1999/5/EG.
Danish	Undertegnede INTELLIGENT SYSTEMS CO.,LTD. erklærer herved, at følgende udstyr IS-TWL-DEBUGGER overholder de væsentlige krav og øvrige relevante krav i direktiv 1999/5/EF.
German	Hiermit erklärt INTELLIGENT SYSTEMS CO.,LTD., dass sich <i>dieser/diese/dieses</i> IS-TWL-DEBUGGER in Übereinstimmung mit den grundlegenden Anforderungen und den anderen relevanten Vorschriften der Richtlinie 1999/5/EG befindet". (BMW)
	Hiermit erklärt INTELLIGENT SYSTEMS CO.,LTD. die Übereinstimmung des Gerätes IS-TWL-DEBUGGER mit den grundlegenden Anforderungen und den anderen relevanten Festlegungen der Richtlinie 1999/5/EG. (Wien).
Greek	ΜΕ ΤΗΝ ΠΑΡΟΥΣΑ INTELLIGENT SYSTEMS CO.,LTD. ΔΗΛΩΝΕΙ ΟΤΙ IS-TWL-DEBUGGER ΣΥΜΜΟΡΦΩΝΕΤΑΙ ΠΡΟΣ ΤΙΣ ΟΥΣΙΩΔΕΙΣ ΑΠΑΙΤΗΣΕΙΣ ΚΑΙ ΤΙΣ ΛΟΙΠΕΣ ΣΧΕΤΙΚΕΣ ΔΙΑΤΑΞΕΙΣ ΤΗΣ ΟΔΗΓΙΑΣ 1999/5/ΕΚ.

Italian	Con la presente INTELLIGENT SYSTEMS CO.,LTD. dichiara che questo IS-TWL-DEBUGGER è conforme ai requisiti essenziali ed alle altre disposizioni pertinenti stabilite dalla direttiva 1999/5/CE.
Spanish	Por medio de la presente INTELLIGENT SYSTEMS CO.,LTD. declara que el IS-TWL-DEBUGGER cumple con los requisitos esenciales y cualesquiera otras disposiciones aplicables o exigibles de la Directiva 1999/5/CE.
Portuguese	INTELLIGENT SYSTEMS CO.,LTD. declara que este IS-TWL-DEBUGGER está conforme com os requisitos essenciais e outras disposições da Directiva 1999/5/CE.
Malti	Hawnhekk, INTELLIGENT SYSTEMS CO.,LTD., jiddikjara li dan IS-TWL-DEBUGGER mal-htiġġijiet essenzjali u ma provvedimenti oħrajn rilevanti li hemm fid-Direttiva 1999/5/EC.
Estonian	Käesolevaga kinnitab INTELLIGENT SYSTEMS CO.,LTD. seadme IS-TWL-DEBUGGER vastavust direktiivi 1999/5/EÜ põhinõuetele ja nimetatud direktiivist tulenevatele teistele asjakohastele sätetele.
Hungarian	Alulírott, INTELLIGENT SYSTEMS CO.,LTD. nyilatkozom, hogy a IS-TWL-DEBUGGER megfelel a vonatkozó alapvető követelményeknek és az 1999/5/EC irányelv egyéb előírásainak.
Slovak	INTELLIGENT SYSTEMS CO.,LTD. týmto vyhlasuje, že IS-TWL-DEBUGGER spĺňa základné požiadavky a všetky príslušné ustanovenia Smernice 1999/5/ES.
Czech	INTELLIGENT SYSTEMS CO.,LTD. tímto prohlašuje, že tento IS-TWL-DEBUGGER je ve shodě se základními požadavky a dalšími příslušnými ustanoveními směrnice 1999/5/ES.
Slovene	Šiuo INTELLIGENT SYSTEMS CO.,LTD. deklaruoja, kad šis IS-TWL-DEBUGGER atitinka esminius reikalavimus ir kitas 1999/5/EB Direktyvos nuostatas.
Lithuanian	Šiuo INTELLIGENT SYSTEMS CO.,LTD. deklaruoja, kad šis IS-TWL-DEBUGGER atitinka esminius reikalavimus ir kitas 1999/5/EB Direktyvos nuostatas.
Latvian	Ar šo INTELLIGENT SYSTEMS CO.,LTD. deklarē, ka IS-TWL-DEBUGGER atbilst Direktīvas 1999/5/EK būtiskajām prasībām un citiem ar to saistītajiem noteikumiem.

## 2 Special Notes

### 2.1 Notes

---

Note the following when using IS-TWL-DEBUGGER.

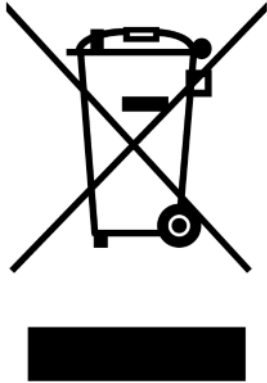
- After you have turned off the IS-TWL-DEBUGGER device, be sure to wait at least five seconds before turning the power on again. If you turn it on again immediately, the device may not function properly.
- Do not turn off the IS-TWL-DEBUGGER device during firmware updates. The IS-TWL-DEBUGGER device may not function properly afterward.
- During use, do not do anything that would prevent heat dissipation, such as blocking the IS-TWL-DEBUGGER airflow vent, placing the IS-TWL-DEBUGGER in a closed container, or placing objects on top of the IS-TWL-DEBUGGER.
- A connector cable connects the IS-TWL-DEBUGGER hardware console ("Console") to the IS-TWL-DEBUGGER hardware controller unit ("Controller"). Connect the plug with the red band to the lower plug on the Controller, and connect the plug with the black band to the upper plug (see Table 4-1). Be sure to tighten the screws.
- The stylus on the Controller cannot be removed. Use the included stylus.
- The SD memory card slot cover of the Controller cannot be opened. Insert SD memory cards into the SD memory card slot on the Console.
- When the IS-TWL-DEBUGGER device is sent to Nintendo for repairs or to add options, the system menu is initialized. Please back up your data and settings before sending in the device. Also, reconfigure the device after it is returned and before using it.
- The liquid crystal display may already have pixels that are illuminated or that do not illuminate. Also, you might observe irregularity in color or brightness, depending on the angle of view. These are properties of the liquid crystal display and are not defects.
- This product contains encryption functions. Please check local export control laws before exporting this product.

### 2.2 End-of-Life Equipment Disposal

---

The crossed-out wheeled bin symbol in Figure 2-1 is affixed to all electrical and electronic equipment that has been put into the European market by Nintendo on or after August 13, 2005.

**Figure 2-1 Disposal Symbol**



This symbol means that at the end of its life, the equipment must be treated in an environmentally sound manner at a licensed recycling plant and its components must be recovered, recycled, or reused in compliance with the requirements of the European Directive on Waste Electrical and Electronic Equipment (2002/96/EC) of January 27, 2003.

Accordingly, you must use separate collection systems for waste electrical and electronic equipment when you dispose of this equipment at the end of its life. Alternatively, you can return this equipment to Nintendo at your own cost, and Nintendo will dispose of it appropriately. To return the equipment, please contact the NOA Development Parts Department for instructions (425-861-2038 or [developmentparts@noa.nintendo.com](mailto:developmentparts@noa.nintendo.com)). You will be given a Return Authorization and instructed to return the equipment to an appropriate Nintendo location in your area.



## 3 Operation Environment

### 3.1 Requirements

---

The following components are required to operate IS-TWL-DEBUGGER.

**Table 3-1 Operation Environment Requirements for IS-TWL-DEBUGGER**

Component	Description
Computer	PC/AT-compatible
Operating system	One of the following 32-bit versions must be installed: <ul style="list-style-type: none"><li>• Microsoft Windows Vista, Service Pack 1 or later</li><li>• Microsoft Windows XP, Service Pack 2 or later</li></ul>
Memory capacity	As recommended by the operating system or greater; depending on the scope of the development project, more memory may be required.
Disc capacity	50 megabytes or more of free memory
Display	XGA display with a 1024x768 resolution or higher
USB interface	One port (two ports when using the capture option)  USB 2.0 (high-speed) is recommended for high-speed downloads or video capture

### 3.2 About USB 2.0

---

The IS-TWL-DEBUGGER device supports USB 2.0 high-speed (480 Mbps) data transmission. To take advantage of all the IS-TWL-DEBUGGER features, make sure to observe the following cautions.

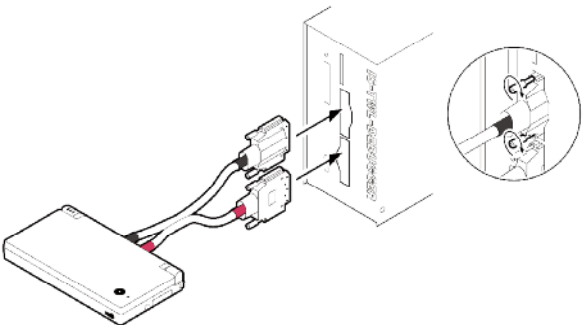
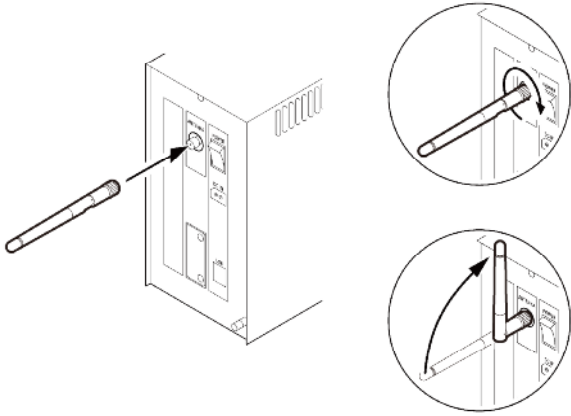
- Confirm that the computer is compatible with high-speed data transmission. If the computer does not support high-speed USB, use a high-speed-compatible USB interface card.
- Make sure to use a USB cable that is compatible with high-speed data transmission to connect the computer with the IS-TWL-DEBUGGER device. A high-speed-compatible USB cable is included with IS-TWL-DEBUGGER.
- When using a USB hub to connect the computer to the IS-TWL-DEBUGGER device, make sure that it is a high-speed-compatible hub.
- If the number of USB devices connected to the computer increases, the data transfer speed will go down. To maximize the data transfer speed, make sure that the only USB device connected to the computer is the IS-TWL-DEBUGGER device.

## 4 Setup

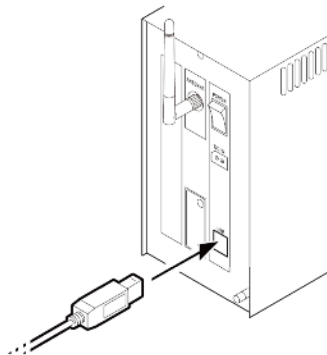
### 4.1 Connections

Set up the IS-TWL-DEBUGGER hardware using the following procedure.

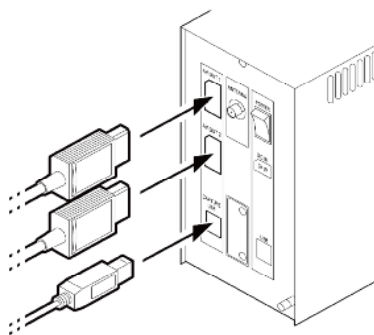
**Table 4-1 Setup Procedure for the IS-TWL-DEBUGGER Hardware**

Step	Illustration
1. Verify that the IS-TWL-DEBUGGER hardware console ("Console") is turned off.	
<p>2. Connect the IS-TWL-DEBUGGER hardware controller to the Console.</p> <p>Connect the plug with the red band to the lower plug and the plug with the black band to the upper plug. Be sure to tighten the connector screws.</p> <p>Some lots contain ferrite cores. If any are included, attach them to the cables.</p>	
3. Connect the antenna to the ANTENNA connector on the back panel of the Console.	

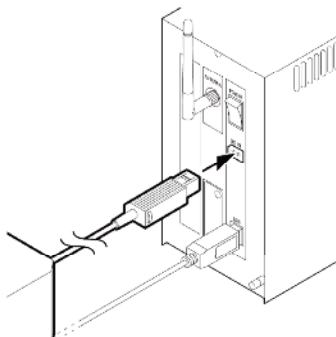
4. Connect the Main Unit to the computer with a USB cable.



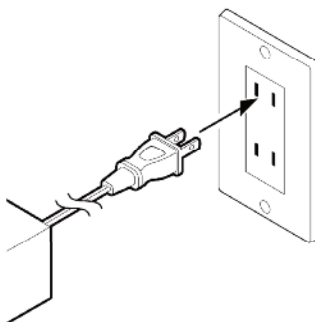
5. When performing television capture with a Console that supports the capture option, connect AV OUT 1 and AV OUT 2 on the back panel to the television. In addition, when performing captures, connect the CAPTURE USB port and the computer with a USB cable.



6. Connect the DC plug of the AC adapter to the DC connector at the back of the Console.



7. Connect the AC plug of the AC adapter to an outlet.



## 4.2 Turning the Power On and Off

Always use the following procedure to turn the power on.

1. Turn on the power switch on the back of the Console.
2. The POWER and SYSTEM lights on the front of the Console illuminate as follows.
  - a. The POWER light briefly illuminates red.
  - b. The POWER and SYSTEM lights illuminate green.
  - c. If the SYSTEM light goes out after a few seconds, the device can be used.

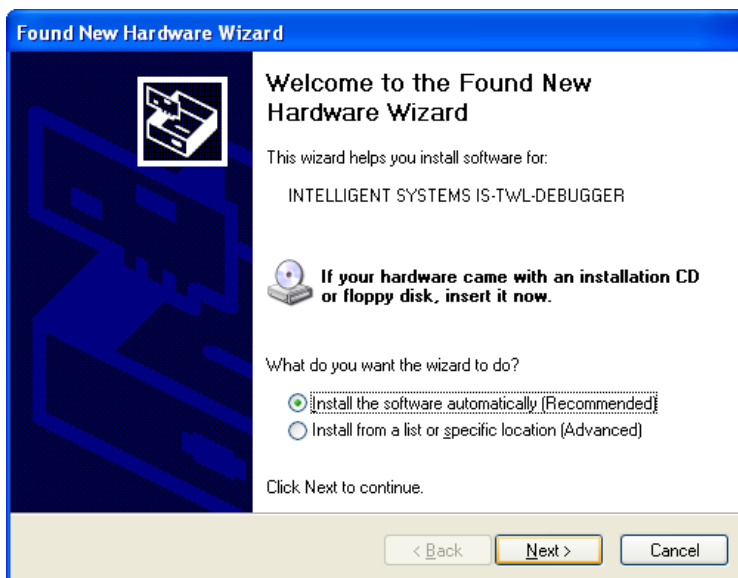
To turn the power off for the IS-TWL-DEBUGGER hardware, use the power switch on the front of the Console.

## 4.3 Installing Device Drivers

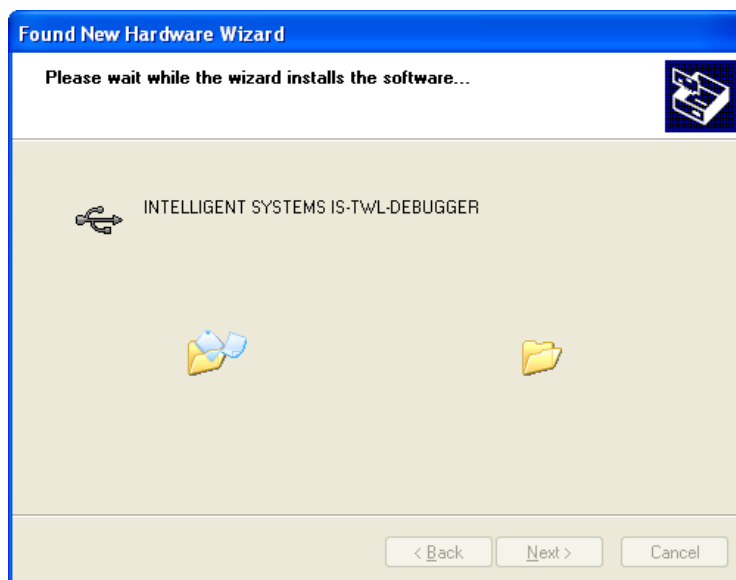
Device drivers must be installed when first connecting the IS-TWL-DEBUGGER hardware to a computer or when first connecting it to a different USB port.

1. When the IS-TWL-DEBUGGER hardware is turned on, the **Found New Hardware Wizard** starts and displays a dialog box that prompts for the installation of a device driver.

**Figure 4-1 Found New Hardware Wizard: Welcome Dialog Box**



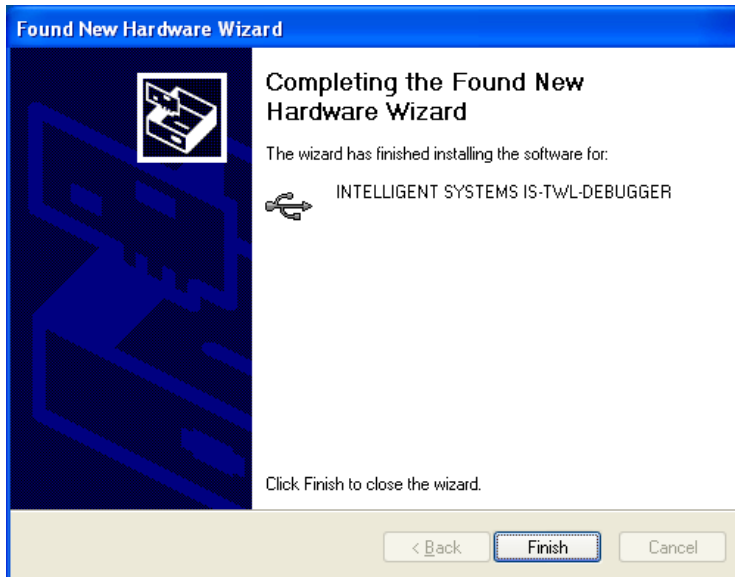
2. Download the drivers from the TWL Downloads page at <http://www.warioworld.com>.
3. Select **Install the software automatically (Recommended)** and click **Next**.
4. Please wait. When the software install begins, the dialog box in Figure 4-2 appears.

**Figure 4-2 Found New Hardware Wizard: Installation Dialog Box**

5. The dialog box in Figure 4-3 appears during installation. Click **Continue Anyway** to continue installation.

**Figure 4-3 Found New Hardware Wizard: Compatibility Dialog Box**

6. When the Found New Hardware Wizard completes installation normally, the dialog box in Figure 4-4 appears. Click **End** to close the wizard.

**Figure 4-4 Found New Hardware Wizard: Completion Dialog Box**

## 4.4 Installing IS-TWL-DEBUGGER

To install IS-TWL-DEBUGGER software onto a computer:

1. Log on to Windows as a user with an Administrator account on the computer.
2. Exit all currently running programs.
3. Download the IS-TWL-DEBUGGER software from the TWL Downloads page at <http://www.warioworld.com>.
4. Using Explorer, browse to the location to which the IS-TWL-DEBUGGER software was downloaded.
5. Open the IS-TWL-DEBUGGER folder and start installation by double-clicking  
IS-TWL-DEBUGGER-XXX.EXE (XXX represents the version).
6. Follow the displayed instructions.
7. If the installation program completes normally, installation ends. Restart the computer if requested to do so after installation completes.

## 4.5 Uninstalling IS-TWL-DEBUGGER

To uninstall the IS-TWL-DEBUGGER software from a computer:

1. Log on to Windows as a user with an Administrator account on the computer.
2. If the IS-TWL-DEBUGGER software is running, exit the software.

3. In Control Panel, click **Programs and Features** to open the **Remove or Change Programs** dialog box. (For Windows XP, click **Add or Remove Programs** to display the **Add or Remove Programs** dialog box.)
4. Select IS-TWL-DEBUGGER from the list of installed programs.
5. Click **Delete** to start deleting the IS-TWL-DEBUGGER software. If deletion completes normally, the IS-TWL-DEBUGGER software has been uninstalled.

Option settings and window position information are not deleted by uninstalling. For this reason, the last state can be used even when uninstalling and installing to upgrade the IS-TWL-DEBUGGER software. To delete this information, delete the following two items after confirming that the IS-TWL-DEBUGGER software is not running.

- Delete the following key and everything below it from within the registry editor:

`HKEY_CURRENT_USER\Software\INTELLIGENT SYSTEMS\IS-TWL-DEBUGGER`

- Delete the following folder from within Explorer:

`C:\Documents and Settings\<user name>\Application Data\INTELLIGENT  
SYSTEMS\IS-TWL-DEBUGGER`

If you make a mistake while editing the registry or accidentally delete the wrong folders, Windows may not run. Use caution when performing the above actions and do so after backing up data or creating a restore point to allow a system restore.

## 5 Support

Nintendo provides support for IS-TWL-DEBUGGER users on its website and by e-mail.

- Website

Information and documents regarding IS-TWL-DEBUGGER and the latest software versions are available on the Nintendo Software Development Support Group (SDSG) website

(<http://www.warioworld.com>). Only those registered in the website's NINTENDO DS group can access and download the latest software versions. Register online at <http://www.warioworld.com>.

- E-mail Support

For questions and comments about IS-TWL-DEBUGGER, please contact the Software Development Support Group at [support@noa.com](mailto:support@noa.com).



INTELLIGENT SYSTEMS CO.,LTD.

Copyright © 2008 INTELLIGENT SYSTEMS CO.,LTD. All rights reserved.

The copyrights for the product are held by INTELLIGENT SYSTEMS CO.,LTD.

The specifications and content in the manuals or help for this product may change in the future without notice.

The software, manual, or help for this product cannot be copied or duplicated in whole or in part without the prior approval of INTELLIGENT SYSTEMS CO.,LTD.

Be aware that we cannot be held responsible for any effects that result from the use of this product.

This product may be used only under an end user license agreement.

This product contains a wireless module that has received the Technical Conditions Compliance Certification.

Microsoft and Windows are either trademarks or registered trademarks of the Microsoft Corporation in the United States and elsewhere.

IBM and IBM PC/AT are trademarks of the IBM Corporation.

IS-TWL-DEBUGGER is the trademark of INTELLIGENT SYSTEMS CO.,LTD.

Other company and product names in this document are the trademarks or registered trademarks of the respective companies.

© 2008 Nintendo

The contents of this document cannot be duplicated, copied, reprinted, transferred, distributed, or loaned in whole or in part without the prior approval of Nintendo.