

IS-NITRO-WRITER

Setup Manual

Version 7/22/2005

**The contents in this document are highly
confidential and should be handled accordingly.**

Confidential

These coded instructions, statements, and computer programs contain proprietary information of Nintendo of America Inc. and/or Nintendo Company Ltd. and are protected by Federal copyright law. They may not be disclosed to third parties or copied or duplicated in any form, in whole or in part, without the prior written consent of Nintendo.

Table of Contents

1	UsingThisProductSafely.....	5
2	Special Notes	8
3	Package Contents.....	10
4	Description of Parts.....	11
4.1	Top Panel	11
4.2	Rear Panel	12
5	Operating Environment	13
5.1	Operating Environment.....	13
5.2	About USB 2.0.....	13
5.3	The USB 2.0 Driver	13
6	Setup.....	14
6.1	Connecting the Device	14
6.2	Installing the Device Driver	14
6.3	Installing the IS-NITRO-WRITER Software	17
6.4	Uninstalling the IS-NITRO-WRITER Software.....	17
7	Startup and Shutdown	18
7.1	Starting up the IS-NITRO-WRITER Software	18
7.2	Selecting the IS-NITRO-WRITER Hardware	18
7.3	Updating the Firmware	19
7.4	Restoring the Firmware	20
7.5	Exiting the IS-NITRO-WRITER Software.....	21
8	Specifications	22
9	Support.....	22

1 Using This Product Safely

To use IS-NITRO-WRITER safely, please read the following items carefully to insure the unit does not malfunction and possibly cause a safety hazard.

- Do not modify or take apart the device.
- If you notice a problem, immediately stop using the unit.
- Do not allow liquids or foreign objects to enter the unit.
- Do not store the unit in a humid or dusty location.
- Never cover the unit or block ventilation.
- Do not bend, pull, or twist the cables.
- Do not subject the unit to strong impact.
- Do not use the unit in locations where the temperature is below 0° C or above 40° C.
- Do not use the unit during an electrical storm.

Regulatory Statement

- This equipment has been tested and found to comply with the limits for a Class A digital device, pursuant to Part 15 of the FCC Rules. These limits are designed to provide reasonable protection against harmful interference when the equipment is operated in a commercial environment.
- This equipment generates, uses, and can radiate radio frequency energy and, if not installed and used in accordance with the instructions, may cause harmful interference to radio communications.
- Operation of this equipment in a residential area is likely to cause harmful interference in which case the user will be required to correct the interference at their own expense.
- This equipment complies with FCC radiation exposure limits set forth for an uncontrolled environment.
- This equipment should be installed and operated with minimum distance 20 cm between the radiator and body. This transmitter must not be co-located or operating in conjunction with any antenna or transmitter.
- This Class A digital apparatus complies with Canadian ICES-003. The term "IC" before the equipment certification number only signifies that the Industry Canada technical specifications were met.

Cet appareil numerique de la classe A est conforme a la norme NMB-003 du Canada.

Le terme "IC" avant le numero d'homologation ne signifie seulement que les normes d'Industrie Canada ont ete respectees."

English	Hereby, INTELLIGENT SYSTEMS Co. Ltd, declares that this IS-NITRO-WRITER is in compliance with the essential requirements and other relevant provisions of Directive 1999/5/EC.
Finnish	INTELLIGENT SYSTEMS Co. Ltd vakuuttaa täten että IS-NITRO-WRITER tyyppinen laite on direktiivin 1999/5/EY oleellisten vaatimusten ja sitä koskevien direktiivin muiden ehtojen mukainen.
Dutch	Hierbij verklaart INTELLIGENT SYSTEMS Co. Ltd dat het toestel IS-NITRO-WRITER in overeenstemming is met de essentiële eisen en de andere relevante bepalingen van richtlijn 1999/5/EG
	Bij deze verklaart INTELLIGENT SYSTEMS Co. Ltd dat deze IS-NITRO-WRITER voldoet aan de essentiële eisen en aan de overige relevante bepalingen van Richtlijn 1999/5/EC.
French	Par la présente INTELLIGENT SYSTEMS Co. Ltd déclare que l'appareil IS-NITRO-WRITER est conforme aux exigences essentielles et aux autres dispositions pertinentes de la directive 1999/5/CE
	Par la présente, INTELLIGENT SYSTEMS Co. Ltd déclare que IS-NITRO-WRITER est conforme aux exigences essentielles et aux autres dispositions de la directive 1999/5/CE qui lui sont applicables
Swedish	Härmed intygar INTELLIGENT SYSTEMS Co. Ltd att denna IS-NITRO-WRITER står i överensstämmelse med de väsentliga egenskapskrav och övriga relevanta bestämmelser som framgår av direktiv 1999/5/EG.
Danish	Undertegnede INTELLIGENT SYSTEMS Co. Ltd erklærer herved, at følgende udstyr IS-NITRO-WRITER overholder de væsentlige krav og øvrige relevante krav i direktiv 1999/5/EF
German	Hiermit erklärt INTELLIGENT SYSTEMS Co. Ltd, dass sich <i>dieser/diese/dieses</i> IS-NITRO-WRITER in Übereinstimmung mit den grundlegenden Anforderungen und den anderen relevanten Vorschriften der Richtlinie 1999/5/EG befindet". (BMWi)
	Hiermit erklärt INTELLIGENT SYSTEMS Co. Ltd die Übereinstimmung des Gerätes IS-NITRO-WRITER mit den grundlegenden Anforderungen und den anderen relevanten Festlegungen der Richtlinie 1999/5/EG. (Wien)
Greek	<i>ΜΕ ΤΗΝ ΠΑΡΟΥΣΑ</i> INTELLIGENT SYSTEMS Co. Ltd <i>ΔΗΛΩΝΕΙ ΟΤΙ</i> IS-NITRO-WRITER <i>ΣΥΜΜΟΡΦΩΝΕΤΑΙ ΠΡΟΣ ΤΙΣ ΟΥΣΙΩΔΕΙΣ ΑΠΑΙΤΗΣΕΙΣ ΚΑΙ ΤΙΣ ΛΟΙΠΕΣ ΣΧΕΤΙΚΕΣ ΔΙΑΤΑΞΕΙΣ ΤΗΣ ΟΔΗΓΙΑΣ</i> 1999/5/ΕΚ

Italian	Con la presente INTELLIGENT SYSTEMS Co. Ltd dichiara che questo IS-NITRO-WRITER è conforme ai requisiti essenziali ed alle altre disposizioni pertinenti stabilite dalla direttiva 1999/5/CE.
Spanish	Por medio de la presente INTELLIGENT SYSTEMS Co. Ltd declara que el IS-NITRO-WRITER cumple con los requisitos esenciales y cualesquiera otras disposiciones aplicables o exigibles de la Directiva 1999/5/CE
Portuguese	INTELLIGENT SYSTEMS Co. Ltd declara que este IS-NITRO-WRITER está conforme com os requisitos essenciais e outras disposições da Directiva 1999/5/CE.
Malti	Hawnhekk, INTELLIGENT SYSTEMS Co. Ltd, jiddikjara li dan IS-NITRO-WRITER mal-htigijiet essenzjali u ma provvedimenti oħrajn rilevanti li hemm fid-Dirrettiva 1999/5/EC
Estonian	Käesolevaga kinnitab INTELLIGENT SYSTEMS Co. Ltd seadme IS-NITRO-WRITER vastavust direktiivi 1999/5/EÜ põhinõuetele ja nimetatud direktiivist tulenevatele teistele asjakohastele sätetele.
Hungarian	Alulírott, INTELLIGENT SYSTEMS Co. Ltd nyilatkozom, hogy a IS-NITRO-WRITER megfelel a vonatkozó alapvető követelményeknek és az 1999/5/EC irányelv egyéb előírásainak.
Slovak	INTELLIGENT SYSTEMS Co. Ltd týmto vyhlasuje, že IS-NITRO-WRITER spĺňa základné požiadavky a všetky príslušné ustanovenia Smernice 1999/5/ES.
Czech	INTELLIGENT SYSTEMS Co. Ltd tímto prohlašuje, že tento IS-NITRO-WRITER je ve shodě se základními požadavky a dalšími příslušnými ustanoveními směrnice 1999/5/ES.
Slovene	Šiuo INTELLIGENT SYSTEMS Co. Ltd deklaruoja, kad šis IS-NITRO-WRITER atitinka esminius reikalavimus ir kitas 1999/5/EB Direktyvos nuostatas.
Lithuanian	Šiuo INTELLIGENT SYSTEMS Co. Ltd deklaruoja, kad šis IS-NITRO-WRITER atitinka esminius reikalavimus ir kitas 1999/5/EB Direktyvos nuostatas.
Latvian	Ar šo INTELLIGENT SYSTEMS Co. Ltd deklarē, ka IS-NITRO-WRITER atbilst Direktīvas 1999/5/EK būtiskajām prasībām un citiem ar to saistītajiem noteikumiem.

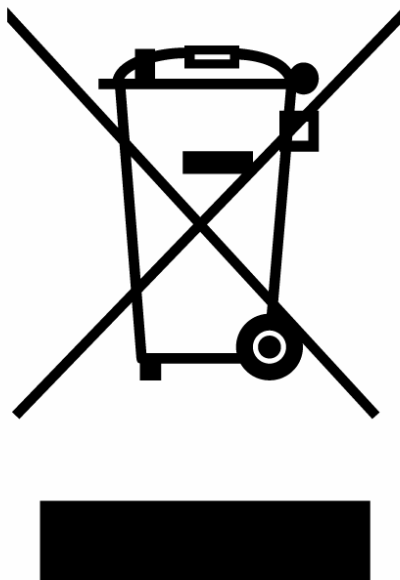
2 Special Notes

When using IS-NITRO-WRITER, please observe the following:

- While the slot LED of the IS-NITRO-WRITER device is ON, do not insert or remove a DS Card. Doing so can cause damage to the IS-NITRO-WRITER device and DS Card.
- Do not turn OFF the power to the IS-NITRO-WRITER device while updating or restoring firmware. This could cause the IS-NITRO-WRITER device to function abnormally..
- While the power switch of the IS-NITRO-WRITER device is ON, do not manipulate the DIP switches. The DIP switches should only be manipulated when the power switch is OFF.
- The IS-NITRO-WRITER device generates heat when in use. Therefore, do not block its vents, do not put it in an enclosed space, do not put any objects on top of it, and do not do anything else that would impede cooling.

“Disposal of this equipment at the end of its life”

The crossed-out wheeled bin symbol (see below) is affixed to all electrical and electronic equipment that has been put onto the market in Europe by Nintendo on or after 13 August 2005.



This symbol means that at the end of its life the equipment must be treated in an environmentally sound manner at a licensed recycling plant and its components must be recovered, recycled or reused, in compliance with the requirements of the European Directive on Waste Electrical and Electronic Equipment (2002/96/EC) of 27 January 2003.

Accordingly you must use the available separate collection systems for waste electrical and electronic equipment when you dispose of this equipment at the end of its life or alternatively you can choose to return this equipment to Nintendo, at your own cost, and Nintendo will then take care of its appropriate disposal. If you wish to do this, please contact NOA Development Parts Department for instructions (*425-861-2038 or developmentparts@noa.nintendo.com*). You will be given a Return Authorization and will be instructed to return the equipment to an appropriate Nintendo location in your region.

3 Package Contents

The following items are included with IS-NITRO-WRITER. Take a moment to ensure that you have all these items before using this device.

Item	Description	Quantity
1	IS-NITRO-WRITER device	1
2	AC Adapter	1 ^{*1}
3	High-Speed USB Cable (approximately 5' (1.5 m) in length)	1
4	IS-NITRO-WRITER Setup Manual (this manual)	1
5	Ferrite Core	2

Note^{*1}: (Shipped Separately) A Nintendo GameCube™ AC adapter designed for use in the region where the IS-NITRO-CAPTURE will be used is required. Contact Nintendo to acquire the correct AC Adapter.

If your IS-NITRO-WRITER device includes the backup option, there should be a checkmark in the "Backup" column of the sticker on the bottom of the IS-NITRO-WRITER device.

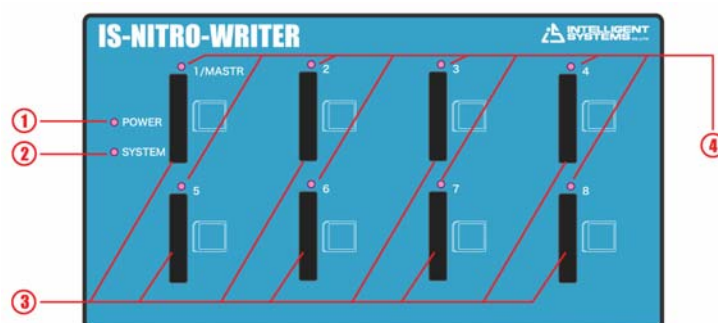
Please connect the ferrite core to the following cable sections:

- IS-NITRO-WRITER device side of the AC adapter.
- IS-NITRO-WRITER device side of the USB cable.

4 Description of Parts

4.1 Top Panel

The following is a description of the front panel of the IS-NITRO-WRITER device (henceforth called only IS-NITRO-WRITER).



1. Power LED

The power LED indicates the power state of IS-NITRO-WRITER. This LED is illuminated if the power switch at the rear of the device is switched ON. If the LED is extinguished, the device is switched OFF.

2. System LED

This LED shows the status of IS-NITRO-WRITER, as follows.

SYSTEM	Description
LED OFF	The IS-NITRO-WRITER is operating normally.
LED ON	One of the following procedures is being implemented: <ul style="list-style-type: none"> • IS-NITRO-WRITER initialization • IS-NITRO-WRITER firmware is being updated • IS-NITRO-WRITER firmware is being restored • DS Card is being accessed
Flashing	A problem has occurred with IS-NITRO-WRITER

3. DS Card Slot

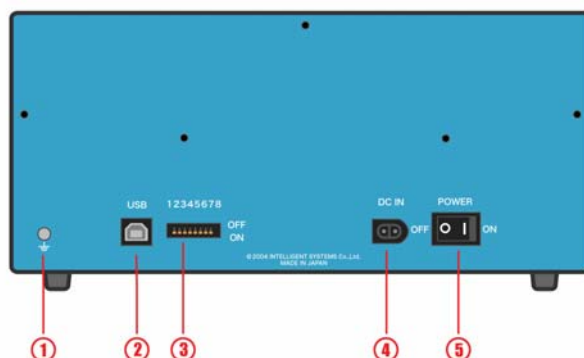
The DS Flash Card plugs into this slot. **Make sure that the Access LED is extinguished, before inserting the DS Flash Card into the DS Card Slot. With the DS Card in a vertical position, insert it into the slot with the label facing to the right.** You will hear a slight click when it has been properly inserted. The DS Card can be removed from the slot by pushing down lightly on it. The DS Card should spring up slightly. Grab the DS Card by the edge and remove it.

4. Access LED

This LED indicates the access status of the DS Card Slot. It is lit when the DS Card is being accessed for read, write, erase, etc.

4.2 Rear Panel

The following is a description of the Rear Panel of IS-NITRO-WRITER, shown below.



1. **Ground Connector**
This connector is used to electrically ground the device.
2. **USB Connector (USB)**
This is a USB connector, used to connect the IS-NITRO-WRITER to the USB port on a computer.
3. **DIP Switches**
These switches are used to configure IS-NITRO-WRITER. When a switch is positioned down, it is ON. When positioned up, it is OFF.

DIP Switches	Description
Switches 1-3	Not used. Set to OFF.
Switch 4	When restoring the IS-NITRO-WRITER firmware, set this to ON. If you are not restoring the firmware, set this to OFF.
Switches 5-8	Not used. Set to OFF..

4. **DC Connector (DC IN)**
The DC Plug of a Nintendo GameCube AC Adapter connects here.
5. **Power Switch (POWER)**
This is the power switch for IS-NITRO-WRITER. When the switch is changed to its [ON] position, it will turn the device ON. When changed to its [OFF] position, the device is turned OFF.

5 Operating Environment

5.1 Operating Environment

The following operating environment is required in order to use IS-NITRO-WRITER.

Item	Description
Computer	IBM PC/AT compatible
Operating System	Either of the following operating systems must be installed: <ul style="list-style-type: none">• Microsoft Windows XP Professional (Service Pack 1 or later)• Microsoft Windows 2000 Professional (Service Pack 4 or later)
Memory capacity	Memory capacity recommended for the operating system
Disk capacity	20 megabytes or more of blank space is required.
Display	Equipped with SVGA resolution of 800 x 600 pixels or more.
Browser	Version 5.0 or later of Microsoft Internet Explorer must be installed.
USB interface	USB 2.0 (high-speed) is recommended. For details on using USB 2.0, see the following section.

5.2 About USB 2.0

The IS-NITRO-WRITER device supports USB 2.0 high-speed (480 Mbps) data transmission. To fully utilize all the features of IS-NITRO-WRITER, it is recommended that the following cautions be observed in order to provide an environment under which IS-NITRO-WRITER can perform high-speed operations.

- Confirm that the computer is compatible with high-speed USB. If the computer does not support high-speed, please use a high-speed compatible USB interface card.
- Make sure to use a USB cable that is compatible with high-speed to connect the computer with the IS-NITRO-WRITER. A high-speed compatible USB cable is included with the IS-NITRO-WRITER.
- When using a USB hub to connect the computer to the IS-NITRO-WRITER, make sure that it is a high-speed compatible hub.
- If the number of USB devices connected to the computer increases, the data transfer speed will go down. In order to maximize the data transfer speed, it is recommended that no USB devices other than the IS-NITRO-WRITER, be connected to the computer.

5.3 The USB 2.0 Driver

As of July, 2004 USB 2.0 drivers for Windows 2000 and Windows XP are provided by Microsoft, Inc. Users of Windows 2000 must have Service Pack 4 or later installed. Users of Windows XP must have Service Pack 1 or later installed. However, please be forewarned that we cannot guarantee operation on these systems for the drivers provided by the USB 2.0 interface card developers.

6 Setup

6.1 Connecting the Device

The following is a description of how to connect IS-NITRO-WRITER.

- (1) First make sure that the power switch for IS-NITRO-WRITER is in the OFF position.
- (2) Connect the computer and the IS-NITRO-WRITER device with a USB cable.
- (3) Connect the DC plug of the Nintendo GameCube AC Adapter to the DC connector (DC In) on the rear panel of IS-NITRO-WRITER.
- (4) Plug the AC plug of the AC Adapter into an AC power outlet.

6.2 Installing the Device Driver

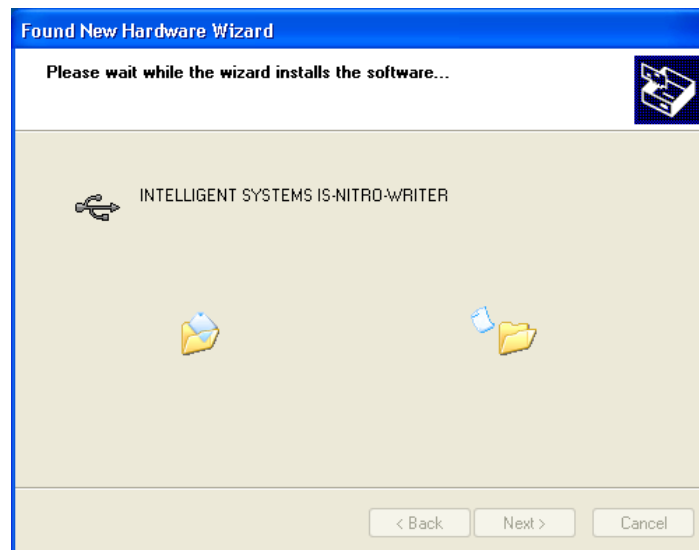
When connecting the IS-NITRO-WRITER to the computer for the first time, or when connecting to a different USB port, you must install the device driver.

- (1) Set the power switch of the IS-NITRO-WRITER to ON.
- (2) [The new hardware detection wizard] Dialog opens to lead you through the installation process.



- (3) If you haven't yet downloaded the device driver from www.warioworld.com, do so at this time.
- (4) Select [Install the software automatically (Recommended)] and click [Next].

- (5) A dialog box similar to the following opens when installation begins.
Note: Do not proceed any further until the dialog box appears.



- (6) The following dialog appears during the install process.
Click the [Continue Anyway] button to continue installation.



- (7) If the Hardware Update Wizard finishes without a problem, the following dialog appears. Click the [Finish] button to close the wizard.



6.3 Installing the IS-NITRO-WRITER Software

The IS-NITRO-WRITER software must be installed on your computer. To install the software, complete these steps.

- (1) Log on to Windows with a user account having administrative privileges.
- (2) Quit all programs that are currently running, other than Windows Explorer.
- (3) If you haven't yet downloaded the installation file from www.warioworld.com, do so at this time. Using Windows Explorer, navigate to the folder in which you've downloaded the installation file.
- (4) Open the IS-NITRO-WRITER folder, and double-click `IS-NITRO-WRITER-XXX.EXE` (XXX designates the version) to run the installation program.
- (5) Complete the process by following the messages that appear.
- (6) The process ends if the installation program finishes normally. Restart the computer when prompted.

6.4 Uninstalling the IS-NITRO-WRITER Software

Complete the following steps to uninstall the IS-NITRO-WRITER software.

- (1) Log on to Windows using a user account with administrator privileges.
- (2) If the IS-NITRO-WRITER software is running, exit the IS-NITRO-WRITER software.
- (3) Click Start > Settings > Control Panel > Adding and Removing Programs. (In Windows 2000, click Adding and Removing Applications.)
- (4) Select IS-NITRO-WRITER from the list of installed programs.
- (5) Click the Remove button.

Option settings and window location information are not deleted by uninstalling or upgrading the IS-NITRO-WRITER software. To erase this information, you must edit the Windows Registry. To remove the Option settings and window location information, confirm that the IS-NITRO-WRITER software is not running and then erase everything *below* the following key using the registry editor.

`HKEY_CURRENT_USER\Software\INTELLIGENT SYSTEMS\IS-NITRO-WRITER`

If you make a mistake editing the registry, Windows may not start. Editing the registry is an unsupported task, therefore we recommend backing up the registry and creating a restoration pointer (Windows XP) so you can restore the Registry. For more information about backing up and editing the registry, see Microsoft Windows Help: Registry, Overview.

7 Startup and Shutdown

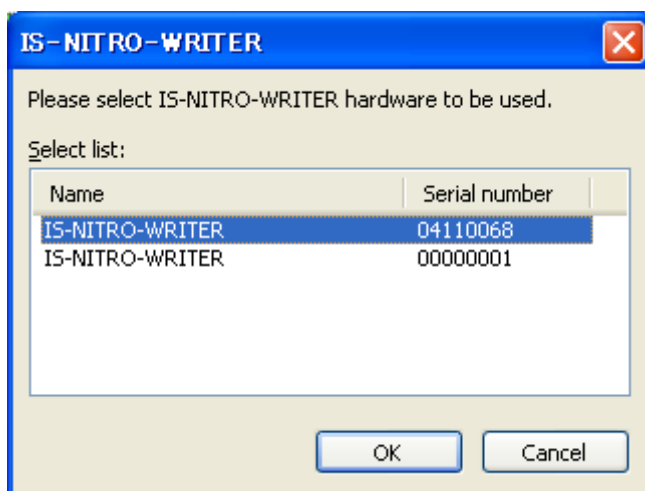
7.1 Starting up the IS-NITRO-WRITER Software

Start the IS-NITRO-WRITER software by clicking the following: Start button > All Programs ("Programs" in Windows 2000) > IS-NITRO-WRITER > IS-NITRO-WRITER.

Select the IS-NITRO-WRITER device to use (if multiple IS-NITRO-WRITER devices are recognized), and the IS-NITRO-WRITER software version and the IS-NITRO-WRITER firmware version are verified. See the following section for more details.

7.2 Selecting the IS-NITRO-WRITER Hardware

When only one IS-NITRO-WRITER device is found during the IS-NITRO-WRITER software startup, the IS-NITRO-WRITER software starts that device. However, if multiple devices are found, the Select IS-NITRO-WRITER Hardware dialog box appears.



The serial numbers of the IS-NITRO-WRITER devices are listed in this dialog box. (The serial number is printed on a sticker on the bottom of each device.) Select an IS-NITRO-WRITER device and click the OK button to start the IS-NITRO-WRITER software.

7.3 Updating the Firmware

At startup, the IS-NITRO-WRITER software checks the versions of the IS-NITRO-WRITER software and hardware. If these versions differ, a message appears prompting you to reconcile the versions.

IS-NITRO-WRITER firmware must be updated to operate with this software version.

Please read the following cautions.

- * **Exit all applications other than IS-NITRO-WRITER.**
- * **Do not operate IS-NITRO-WRITER while updating its firmware. This requires about 20 seconds.**
- * **If you encounter a problem, such as the device is not recognized as a USB device after failing the update process, please read the setup manual.**

After you understand the above conditions, please click the Update button.

This message appears when the firmware version of the IS-NITRO-WRITER device is older than the software.

The message may appear when updating the IS-NITRO-WRITER software. If so, click the Update button to update the firmware of the IS-NITRO-WRITER device.

While updating the firmware, do not turn the IS-NITRO-WRITER device OFF, reset the computer, or operate the IS-NITRO-WRITER device or the computer.

If this dialog box closes and the IS-NITRO-WRITER software starts normally, the update succeeded and you can use the IS-NITRO-WRITER software. If the IS-NITRO-WRITER software does not start normally, the firmware update of the IS-NITRO-WRITER device may have failed. If so, see Restoring the Firmware (on the following page) and follow the recovery procedure.

Note that if you click the Do Not Update button, the software runs without being updated. However, the software is not usable.

You are using software that is not supported by the IS-NITRO-WRITER firmware.

- **A previous version of the firmware cannot be installed.**
- **Please download the latest version of the software from <http://www.warioworld.com/>.**

This message appears when the firmware version of the IS-NITRO-WRITER device is newer than the software.

When this message appears, you cannot use the IS-NITRO-WRITER software. Download a new version of the IS-NITRO-WRITER software or try Restoring the Firmware.

When the IS-NITRO-WRITER software version and the IS-NITRO-WRITER device firmware version are already the same, this message does not appear and the software starts immediately.

7.4 Restoring the Firmware

When a firmware update fails, the IS-NITRO-WRITER device may not operate normally; the firmware may be damaged or the IS-NITRO-WRITER may not be recognized as a USB device. In such cases, use this procedure to recover the damaged IS-NITRO-WRITER firmware.

- (1) Turn the IS-NITRO-WRITER device OFF.
- (2) Change DIP switch number 4 (found on the rear panel of IS-NITRO-WRITER) to the ON position.
- (3) Turn the IS-NITRO-WRITER device ON.
- (4) **Only after confirming that the System LED (SYSTEM), located on top panel of IS-NITRO-WRITER is NOT LIT, turn the IS-NITRO-WRITER device OFF.**
- (5) Change DIP switch number 4 to the OFF position.

If the IS-NITRO-WRITER device does not operate normally even after performing this procedure, the IS-NITRO-WRITER device must be repaired. If your device needs repair, contact support@noa.com.

7.5 Exiting the IS-NITRO-WRITER Software

Perform one of the following procedures to exit the IS-NITRO-WRITER software.

- Select Exit from the File menu.
- Select Close from the menu displayed by clicking on the title bar icon.
- Double-click the title bar icon.
- Click the Close button on the title bar.
- Press Alt+F4 on the keyboard.

8 Specifications

The specifications of the IS-NITRO-WRITER are as follows:

Item	Description
Product Name	IS-NITRO-WRITER
Connectors	USB connector (Series B) DC connector Ground Connector
Slot	NITRO card slot for Nintendo DS
Power Source	DC12V 3.25A (Nintendo GameCube AC Adapter)
Operating Environment	10° C – 40° C (No condensation)
External Dimensions	Width: 10.2" (260 mm) x Height: 4.9" (126 mm) x Depth: 5.5" (141 mm) (Excluding the largest protrusions other than the feet)
Weight	Approximately 5.3 lbs (2.4 kg)

9 Support

To provide support to users of IS-NITRO-WRITER, Nintendo has a website and e-mail support.

- **Website**

Information and documents regarding IS-NITRO-WRITER and the latest software versions are available on the Nintendo Software Development Support Group website (<http://www.warioworld.com>). Only those registered in the NINTENDO DS group of the website can gain access to download the latest versions. Register online at (<http://www.warioworld.com>).

- **E-mail Support**

For questions and comments about IS-NITRO-WRITER, please contact the Software Development Support Group at support@noa.com.

Intelligent Systems Co., Ltd.
Copyright © 2004 INTELLIGENT SYSTEMS Co., Ltd. All rights reserved.

- This product is copyrighted by Intelligent Systems Co., Ltd.
- The specifications of this device and the contents of this manual are subject to change in the future without prior notification.
- Copying or reproducing this manual in whole or in part in any way without the consent of Intelligent Systems Co., Ltd. is expressly forbidden.
- Please be aware that Intelligent Systems Co., Ltd. is not responsible for anything resulting from the use of this product.
- This product can only be used under the terms of the licensing agreement.
- Nintendo DS and Game Boy Advance are trademarks and registered trademarks of Nintendo, Inc.
- IS-NITRO-CAPTURE, IS-NITRO-DEBUGGER, IS-NITRO-EMULATOR, IS-NITRO-HUB, IS-NITRO-UIC, IS-NITRO-VIDEO and IS-NITRO-WRITER are trademarks of Intelligent Systems Co., Ltd.
- All other company names and product names contained herein are trademarks and registered trademarks of their respective companies.

Copyright © 2004, 2005 Nintendo of America Inc.

Microsoft, Windows, and Internet Explorer are registered trademarks of Microsoft Corporation in the USA and other countries.

IBM and IBM PC/AT are registered trademarks of IBM Corporation.

Nintendo DS, NINTENDO DS, Game Boy Advance, GAMEBOY ADVANCE, Nintendo GameCube, NINTENDO GAMECUBE are trademarks or registered trademarks of Nintendo Co. Ltd. / Nintendo of America Inc.

IS-NITRO-CAPTURE, IS-NITRO-DEBUGGER, IS-NITRO-EMULATOR, IS-NITRO-HUB, IS-NITRO-UIC, IS-NITRO-VIDEO, and IS-NITRO-WRITER are registered trademarks of Intelligent Systems Co, Ltd.

All other company and product names included in this document are registered trademarks of their respective companies.

© 2004, 2005 Nintendo

The contents of this document cannot be duplicated, copied, reprinted, transferred, distributed or loaned in whole or in part without the prior approval of Nintendo.