

# IS-NITRO-CAPTURE

## Users Manual

Version 01/27/2005

**The contents in this document are highly  
confidential and should be handled accordingly.**

**Confidential**

These coded instructions, statements, and computer programs contain proprietary information of Nintendo of America Inc. and/or Nintendo Company Ltd. and are protected by Federal copyright law. They may not be disclosed to third parties or copied or duplicated in any form, in whole or in part, without the prior written consent of Nintendo.

# Table of Contents

1	Using This Product Safely .....	5
2	Special Notes .....	8
3	Package Contents .....	10
4	Description of Parts .....	11
4.1	Front Panel.....	11
4.2	Rear Panel .....	12
4.3	Top Panel .....	13
4.4	The Controller .....	14
5	Operating Environment.....	16
5.1	About USB 2.0 .....	16
5.2	The USB 2.0 Driver .....	17
6	Setup .....	18
6.1	Connecting the Device .....	18
6.2	Installing the Device Driver.....	18
6.3	Installing the IS-NITRO-CAPTURE Software .....	20
6.4	Uninstalling the IS-NITRO-CAPTURE Software.....	21
6.5	Video and Audio Output .....	21
6.6	Performing DS Wireless Communication Using Wires .....	22
6.7	Performing DS Wireless Communication Without Wires .....	22
7	Startup and Shutdown.....	23
7.1	Starting up IS-NITRO-CAPTURE .....	23
7.2	IS-NITRO-CAPTURE Device Selection.....	23
7.3	Updating the Firmware .....	24
7.4	Restoring the Firmware .....	25
7.5	Closing the IS-NITRO-CAPTURE Application .....	25
8	Operating Procedure .....	26
8.1	Capturing an Image.....	26
8.2	Starting a Game .....	26
8.3	Ending a Game .....	26
8.4	Resetting a Game .....	26
9	Specifications.....	27
10	Support .....	28



# 1 Using This Product Safely

To use IS-NITRO-CAPTURE safely, please read the following items carefully to insure the unit does not malfunction and possibly cause a safety hazard.

- Do not modify or take apart the device.
- If you notice a problem, immediately stop using the unit.
- Do not allow liquids or foreign objects to enter the unit.
- Do not store the unit in a humid or dusty location.
- Never cover the unit or block ventilation.
- Do not bend, pull, or twist the cables.
- Do not subject the unit to strong impact.
- Do not use the unit in locations where the temperature is below 0° C or above 40° C.
- Do not use the unit during an electrical storm.

## **Regulatory Statement**

- This equipment has been tested and found to comply with the limits for a Class A digital device, pursuant to Part 15 of the FCC Rules. These limits are designed to provide reasonable protection against harmful interference when the equipment is operated in a commercial environment.
- This equipment generates, uses, and can radiate radio frequency energy and, if not installed and used in accordance with the instructions, may cause harmful interference to radio communications.
- Operation of this equipment in a residential area is likely to cause harmful interference in which case the user will be required to correct the interference at their own expense.
- This equipment complies with FCC radiation exposure limits set forth for an uncontrolled environment.
- This equipment should be installed and operated with minimum distance 20 cm between the radiator and body. This transmitter must not be co-located or operating in conjunction with any antenna or transmitter.
- This Class A digital apparatus complies with Canadian ICES-003. The term "IC" before the equipment certification number only signifies that the Industry Canada technical specifications were met.

Cet appareil numerique de la classe A est conforme a la norme NMB-003 du Canada.

Le terme "IC" avant le numero d'homologation ne signifie seulement que les normes d'Industrie Canada ont ete respectees."

English	Hereby, INTELLIGENT SYSTEMS Co. Ltd, declares that this IS-NITRO-CAPTURE is in compliance with the essential requirements and other relevant provisions of Directive 1999/5/EC.
Finnish	INTELLIGENT SYSTEMS Co. Ltd vakuuttaa täten että IS-NITRO-CAPTURE tyyppinen laite on direktiivin 1999/5/EY oleellisten vaatimusten ja sitä koskevien direktiivin muiden ehtojen mukainen.
Dutch	Hierbij verklaart INTELLIGENT SYSTEMS Co. Ltd dat het toestel IS-NITRO-CAPTURE in overeenstemming is met de essentiële eisen en de andere relevante bepalingen van richtlijn 1999/5/EG
	Bij deze verklaart INTELLIGENT SYSTEMS Co. Ltd dat deze IS-NITRO-CAPTURE voldoet aan de essentiële eisen en aan de overige relevante bepalingen van Richtlijn 1999/5/EC.
French	Par la présente INTELLIGENT SYSTEMS Co. Ltd déclare que l'appareil IS-NITRO-CAPTURE est conforme aux exigences essentielles et aux autres dispositions pertinentes de la directive 1999/5/CE
	Par la présente, INTELLIGENT SYSTEMS Co. Ltd déclare que IS-NITRO-CAPTURE est conforme aux exigences essentielles et aux autres dispositions de la directive 1999/5/CE qui lui sont applicables
Swedish	Härmed intygar INTELLIGENT SYSTEMS Co. Ltd att denna IS-NITRO-CAPTURE står i överensstämmelse med de väsentliga egenskapskrav och övriga relevanta bestämmelser som framgår av direktiv 1999/5/EG.
Danish	Undertegnede INTELLIGENT SYSTEMS Co. Ltd erklærer herved, at følgende udstyr IS-NITRO-CAPTURE overholder de væsentlige krav og øvrige relevante krav i direktiv 1999/5/EF
German	Hiermit erklärt INTELLIGENT SYSTEMS Co. Ltd, dass sich <i>dieser/diese/dieses</i> IS-NITRO-CAPTURE in Übereinstimmung mit den grundlegenden Anforderungen und den anderen relevanten Vorschriften der Richtlinie 1999/5/EG befindet". (BMW i)
	Hiermit erklärt INTELLIGENT SYSTEMS Co. Ltd die Übereinstimmung des Gerätes IS-NITRO-CAPTURE mit den grundlegenden Anforderungen und den anderen relevanten Festlegungen der Richtlinie 1999/5/EG. (Wien)
Greek	<i>ΜΕ ΤΗΝ ΠΑΡΟΥΣΑ</i> INTELLIGENT SYSTEMS Co. Ltd <i>ΔΗΛΩΝΕΙ ΟΤΙ</i> IS-NITRO-CAPTURE <i>ΣΥΜΜΟΡΦΩΝΕΤΑΙ ΠΡΟΣ ΤΙΣ ΟΥΣΙΩΔΕΙΣ ΑΠΑΙΤΗΣΕΙΣ ΚΑΙ ΤΙΣ ΛΟΙΠΕΣ ΣΧΕΤΙΚΕΣ ΔΙΑΤΑΞΕΙΣ ΤΗΣ ΟΔΗΓΙΑΣ 1999/5/ΕΚ</i>

Italian	Con la presente INTELLIGENT SYSTEMS Co. Ltd dichiara che questo IS-NITRO-CAPTURE è conforme ai requisiti essenziali ed alle altre disposizioni pertinenti stabilite dalla direttiva 1999/5/CE.
Spanish	Por medio de la presente INTELLIGENT SYSTEMS Co. Ltd declara que el IS-NITRO-CAPTURE cumple con los requisitos esenciales y cualesquiera otras disposiciones aplicables o exigibles de la Directiva 1999/5/CE
Portuguese	INTELLIGENT SYSTEMS Co. Ltd declara que este IS-NITRO-CAPTURE está conforme com os requisitos essenciais e outras disposições da Directiva 1999/5/CE.
Malti	Hawnhekk, INTELLIGENT SYSTEMS Co. Ltd, jiddikjara li dan IS-NITRO-CAPTURE mal-htigijiet essenzjali u ma provvedimenti oħrajn rilevanti li hemm fid-Dirrettiva 1999/5/EC
Estonian	Käesolevaga kinnitab INTELLIGENT SYSTEMS Co. Ltd seadme IS-NITRO-CAPTURE vastavust direktiivi 1999/5/EÜ põhinõuetele ja nimetatud direktiivist tulenevatele teistele asjakohastele sätetele.
Hungarian	Alulírott, INTELLIGENT SYSTEMS Co. Ltd nyilatkozom, hogy a IS-NITRO-CAPTURE megfelel a vonatkozó alapvető követelményeknek és az 1999/5/EC irányelv egyéb előírásainak.
Slovak	INTELLIGENT SYSTEMS Co. Ltd týmto vyhlasuje, že IS-NITRO-CAPTURE spĺňa základné požiadavky a všetky príslušné ustanovenia Smernice 1999/5/ES.
Czech	INTELLIGENT SYSTEMS Co. Ltd tímto prohlašuje, že tento IS-NITRO-CAPTURE je ve shodě se základními požadavky a dalšími příslušnými ustanoveními směrnice 1999/5/ES.
Slovene	Šiuo INTELLIGENT SYSTEMS Co. Ltd deklaruoja, kad šis IS-NITRO-CAPTURE atitinka esminius reikalavimus ir kitas 1999/5/EB Direktyvos nuostatas.
Lithuanian	Šiuo INTELLIGENT SYSTEMS Co. Ltd deklaruoja, kad šis IS-NITRO-CAPTURE atitinka esminius reikalavimus ir kitas 1999/5/EB Direktyvos nuostatas.
Latvian	Ar šo INTELLIGENT SYSTEMS Co. Ltd deklarē, ka IS-NITRO-CAPTURE atbilst Direktīvas 1999/5/EK būtiskajām prasībām un citiem ar to saistītajiem noteikumiem.

## 2 Special Notes

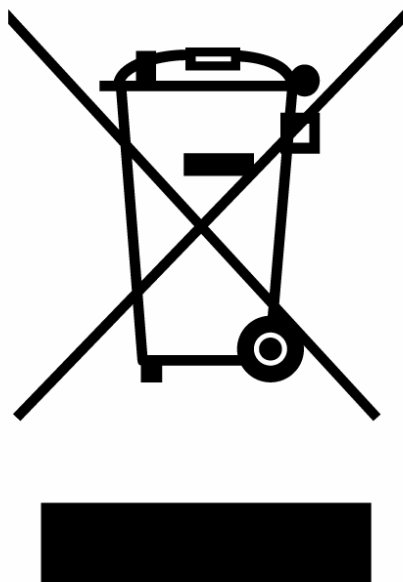
When using IS-NITRO-CAPTURE, please observe the following:

- After you have turned the IS-NITRO-CAPTURE device OFF, be sure to wait at least five seconds before setting the power switch to ON again. If you turn it on again immediately, the device may not function properly.
- While the power switch of the IS-NITRO-CAPTURE device is ON, do not insert or remove a DS Card or GBA Game Pak. Doing so can cause damage to the IS-NITRO-CAPTURE device, the DS Card, and the GBA Game Pak.
- Do not turn OFF the power to the IS-NITRO-CAPTURE device while updating or restoring firmware. This could cause the IS-NITRO-CAPTURE device to function abnormally.
- While the power switch of the IS-NITRO-CAPTURE device is ON, do not manipulate the DIP switches. The DIP switches should only be manipulated when the power switch is OFF.
- The IS-NITRO-CAPTURE device generates heat when in use. Therefore, do not block its vents, do not put it in an enclosed space, do not put any objects on top of it, and do not do anything else that would impede cooling.
- If you purchase the wireless option after you have purchased the IS-NITRO-CAPTURE unit, you must return the IS-NITRO-CAPTURE unit to Nintendo of America. During the installation of the wireless option the cover that forms the top and sides of the IS-NITRO-CAPTURE device will be replaced. Do not attach asset control labels to this cover.
- Notice that there is a possibility that using images captured with **IS-NITRO-CAPTURE will violate such rights as copyright or portrait rights**. Notice that Intelligent Systems and Nintendo bears no responsibility for any infringement of rights such as copyright, portrait rights, rights to privacy, or rights of personality or reputation resulting from acts that include viewing, reproducing, or modifying captured images.



**“Disposal of this equipment at the end of its life”**

The crossed-out wheeled bin symbol (see below) is affixed to all electrical and electronic equipment that has been put onto the market in Europe by Nintendo on or after 13 August 2005.



This symbol means that at the end of its life the equipment must be treated in an environmentally sound manner at a licensed recycling plant and its components must be recovered, recycled or reused, in compliance with the requirements of the European Directive on Waste Electrical and Electronic Equipment (2002/96/EC) of 27 January 2003.

Accordingly you must use the available separate collection systems for waste electrical and electronic equipment when you dispose of this equipment at the end of its life or alternatively you can choose to return this equipment to Nintendo, at your own cost, and Nintendo will then take care of its appropriate disposal. If you wish to do this, please contact NOA Development Parts Department for instructions (425-861-2038 or [developmentparts@noa.nintendo.com](mailto:developmentparts@noa.nintendo.com)). You will be given a Return Authorization and will be instructed to return the equipment to an appropriate Nintendo location in your region.

### 3 Package Contents

The following items are included with IS-NITRO-CAPTURE. Take a moment to ensure that you have all these items before using this device.

Item	Description	Quantity
1	IS-NITRO-CAPTURE Device (including the controller)	1
2	Stylus (stored in the controller)	1
3	AC Adapter	1 <sup>*1</sup>
4	High-Speed USB Cable (approximately 5' (1.5 m) in length)	1
5	IS-NITRO-CAPTURE Users Manual (this manual)	1
6	Ferrite Cores	6

**Note**<sup>\*1</sup>: (Shipped Separately) A Nintendo GameCube™ AC adapter designed for use in the region where the IS-NITRO-CAPTURE will be used is required. Contact Nintendo to acquire the correct AC Adapter.

If your IS-NITRO-CAPTURE device includes the wireless option, there should be a checkmark in the "Wireless" column of the sticker on the bottom of the IS-NITRO-CAPTURE unit.

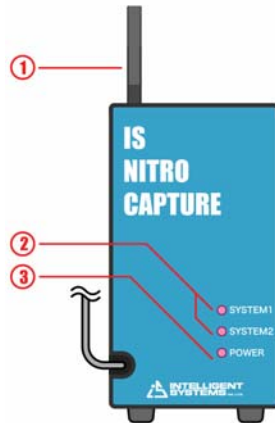
Connect a ferrite core to the following cable sections:

- IS-NITRO-CAPTURE device side of the cable that connects the IS-NITRO-CAPTURE device front panel to the controller.
- IS-NITRO-CAPTURE device side of the AC adapter.
- IS-NITRO-CAPTURE device side of the DS Wireless Communications cable.
- IS-NITRO-CAPTURE device side of the USB cable.
- IS-NITRO-CAPTURE device side of the Video cables.

## 4 Description of Parts

### 4.1 Front Panel

The following is a description of the front panel of the IS-NITRO-CAPTURE device (henceforth called only IS-NITRO-CAPTURE).



1. **Antenna**

This antenna is used to perform DS Wireless Communications. It is only installed if you have purchased the wireless option.

2. **System LEDs (SYSTEM1, SYSTEM2)**

The various states of IS-NITRO-CAPTURE are shown below.

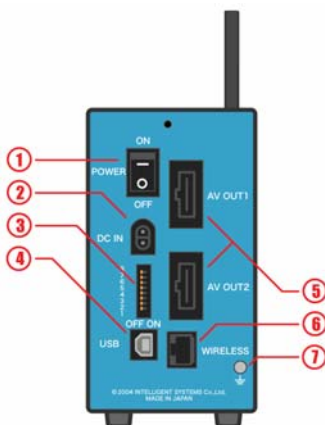
SYSTEM1	SYSTEM2	Description
LED OFF	LED OFF	Indicates that the IS-NITRO-CAPTURE unit is operating normally
LED ON	LED ON	Indicates that one of the following processes is taking place: <ul style="list-style-type: none"> <li>IS-NITRO-CAPTURE initialization</li> <li>IS-NITRO-CAPTURE firmware is being updated</li> <li>IS-NITRO-CAPTURE firmware is being restored</li> </ul>
LED Blinking	LED Blinking	Indicates that an error has occurred in the IS-NITRO-CAPTURE device

3. **Power LED (POWER)**

The power LED indicates the power state of IS-NITRO-CAPTURE. This LED is lit if the power switch at the rear of the device is switched ON. If the LED is not lit, the device is switched OFF.

## 4.2 Rear Panel

The following is a description of the Rear Panel of IS-NITRO-CAPTURE, shown below.



### 1. Power Switch (POWER)

This is the power switch for IS-NITRO-CAPTURE. When the switch is changed to its [ON] position, it will turn the device ON. When changed to its [OFF] position the device is turned OFF.

### 2. DC Connector (DC IN)

The DC Plug of a Nintendo GameCube AC Adapter connects here.

### 3. DIP Switches

These switches are used to configure IS-NITRO-CAPTURE. When a switch is positioned to the right it is ON. When positioned to the left it is OFF.

Dip Switch	Description
Switches 1-3	Not used. Set to OFF.
Switch 4	When restoring the IS-NITRO-CAPTURE firmware, set this to ON. If you are not restoring the firmware, set this to OFF.
Switch 5	Toggles between wired and wireless DS Wireless Communication. It is set to OFF for wired communication and ON for wireless communication. This switch can be used when you have purchased the wireless option.
Switch 6	Used to set the color of the outside of the LCD screen, on images output by the AV Cable. Set to OFF for black and ON for gray.
Switch 7	When set to ON, the DS Upper Screen and Lower Screen are output as a single image from AVOUT1. When set to OFF, the upper screen is output from AVOUT1.
Switch 8	When set to ON, the DS upper and lower screens are output as a single image from AVOUT2. When set to OFF, the lower screen is output from AVOUT2..

### 4. USB Connector (USB)

This is a USB connector used to connect the IS-NITRO-CAPTURE to the USB port on a computer.

#### 5. Audio/Video Output Connectors (AVOUT1, AVOUT2)

These connectors are used for outputting audio and video from the LCD screen to a TV monitor or video device. AV OUT1 outputs audio and video from the upper screen. AV OUT2 outputs audio and video from the lower screen.

#### 6. Wireless Connector (WIRELESS)

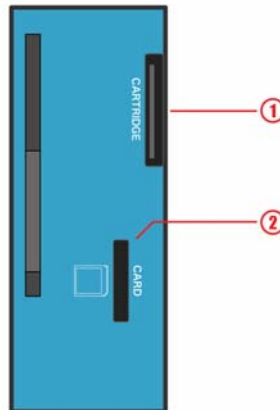
This is a connector that is used to perform wired DS Wireless Communications with the Nintendo DS development tools.

#### 7. Ground Connector

This connector is used to electrically ground the device.

### 4.3 Top Panel

The following is a description of the slots on top of the IS-NITRO-CAPTURE.



#### 1. GBA Game Pak Slot (CARTRIDGE)

The GBA Game Pak plugs into this slot. **Make sure that the power switch of the IS-NITRO-CAPTURE is in the OFF position before inserting the GBA Game Pak.** With the Game Pak in a vertical position, insert it into the slot with the label facing to the right.

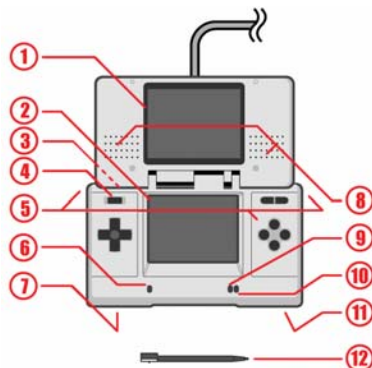
#### 2. DS Game Card Slot (CARD)

The DS Card plugs into this slot. **Make sure that the power switch of the IS-NITRO-CAPTURE is in the OFF position before inserting the DS Card into the slot.** With the DS Card in a vertical position, insert it into the slot with the label facing to the right. **You will hear a slight click when it has been properly inserted. The DS Card can be removed from the slot by pushing down lightly on it.** The DS Card should spring up slightly. Grab the DS Card by the edge and remove it.

## 4.4 The Controller

---

The following is a description of each part of the Controller.



**1. Upper Screen**

This screen is a backlit, 3-inch color TFT LCD.

**2. Lower Screen (Touch Screen)**

This screen is a backlit, 3-inch TFT color LCD. This LCD also has touch screen functionality.

**3. External Extension Connector**

By connecting the Game Boy Advance Headphone adapter (NOA Part #51067), you can attach a set of stereo headphones. If the headphones are connected, no sound will come out of the speakers. The connector is powered by the IS-NITRO-CAPTURE device, so there is no need to connect the AC Adapter for Game Boy Advance SP or Nintendo DS to this peripheral connector.

**4. Power Button (POWER)**

Although this is labeled as the Power Button, on IS-NITRO-CAPTURE it is used as a reset button. To reset, hold this button down for approximately one second.

**5. Control Buttons**

These buttons are used to control the game.

**6. Microphone (MIC.)**

The microphone can be used to input sounds.

**7. Volume Control (VOL.)**

This controls the sound volume of the speakers or the stereo headphones.

**8. Speakers (L, R)**

These play stereo sound when headphones are not connected.

**9. Recharge Indicator LED**

This LED is not used on IS-NITRO-CAPTURE.

**10. Power Indicator LED**

This LED displays the power state of IS-NITRO-CAPTURE. It is lit when the power switch at the rear of IS-NITRO-CAPTURE is set to ON, and not lit when the switch is set to OFF.

**11. Audio Jack**

This connector allows for the connection of stereo headphones, microphone, or stereo headset. If headphones are connected, there will be no sound from the speakers.

**12. Stylus**

The stylus is for use with the Touch Screen.

## 5 Operating Environment

The following operating environment is required in order to use IS-NITRO-CAPTURE with a computer.

Component	Description
Computer	IBM PC/AT Compatible
Operating System	The software must be installed under one of the following operating systems: <ul style="list-style-type: none"><li>• Microsoft Windows XP Professional (Service Pack 1 or later)</li><li>• Microsoft Windows 2000 Professional (Service Pack 4 or later)</li></ul>
Memory	The amount of memory recommended for the operating system or greater must be available.
Disk Space	There must be 20 megabytes or more of free disk space available.
Display	An SVGA (800 pixels x 600 pixels) or greater resolution display must be available.
Browser	Microsoft Internet Explorer version 5.0 or higher must be installed.
USB Interface	We recommend USB 2.0 (Hi-Speed). For details when using USB 2.0, please refer to "About USB 2.0", below.

### 5.1 About USB 2.0

---

The IS-NITRO-CAPTURE device supports USB 2.0 high-speed (480 Mbps) data transmission. To fully utilize all the features of IS-NITRO-CAPTURE, it is recommended that the following cautions be observed in order to provide an environment under which IS-NITRO-CAPTURE can perform high-speed operations.

- Confirm that the computer is compatible with high-speed USB. If the computer does not support high-speed, please use a high-speed compatible USB interface card.
- Make sure to use a USB cable that is compatible with high-speed to connect the computer with the IS-NITRO-CAPTURE. A high-speed compatible USB cable is included with the IS-NITRO-CAPTURE.
- When using a USB hub to connect the computer to the IS-NITRO-CAPTURE, make sure that it is a high-speed compatible hub.
- If the number of USB devices connected to the computer increases, the data transfer speed will go down. In order to maximize the data transfer speed, it is recommended that no USB devices other than the IS-NITRO-CAPTURE, be connected to the computer.



## 5.2 The USB 2.0 Driver

---

As of July, 2004 USB 2.0 drivers for Windows 2000 and Windows XP are provided by Microsoft, Inc. Users of Windows 2000 must have Service Pack 4 or later installed. Users of Windows XP must have Service Pack 1 or later installed. However, please be forewarned that we cannot guarantee operation on these systems for the drivers provided by the USB 2.0 interface card developers.

## 6 Setup

### 6.1 Connecting the Device

---

The following is a description of how to connect IS-NITRO-CAPTURE.

1. First make sure that the power switch for IS-NITRO-CAPTURE is in the OFF position.
2. Connect the computer and the IS-NITRO-CAPTURE device with a USB cable.
3. Connect the DC plug of the Nintendo GameCube AC Adapter to the DC connector (DC In) on the rear panel of IS-NITRO-CAPTURE.
4. Plug the AC plug of the AC Adapter into an AC power outlet.

### 6.2 Installing the Device Driver

---

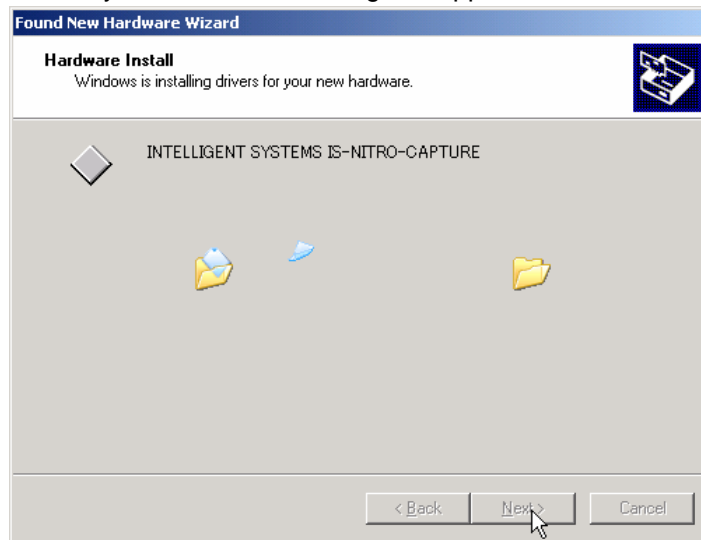
You must install a device driver the first time you connect the IS-NITRO-CAPTURE device to a computer, or when you connect it to a different USB port.

1. Set the power switch of the IS-NITRO-CAPTURE to ON.
2. [The new hardware detection wizard] Dialog opens to lead you through the installation process.
3. If you haven't yet downloaded the device driver from [www.warioworld.com](http://www.warioworld.com), do so at this time.
4. Select [Search for a suitable driver for my device (recommended)] and click [Next].



5. A dialog box similar to the following opens when installation begins.

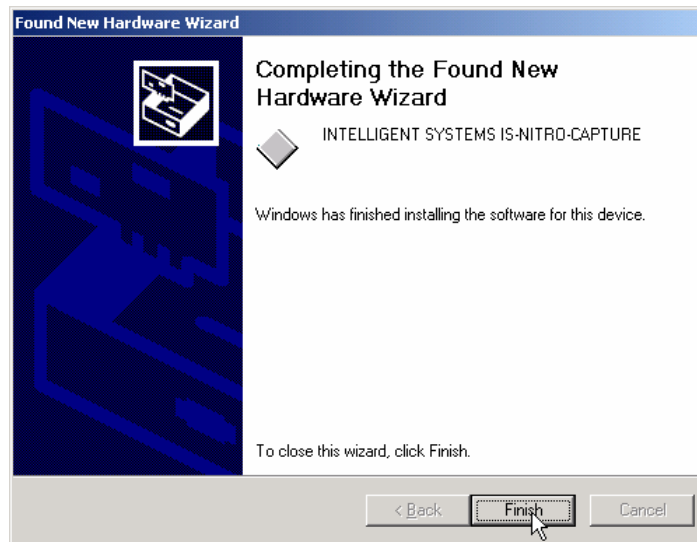
**Note:** Do not proceed any further until the dialog box appears..



6. The following dialog appears during the install process.  
Click the [Continue Anyway] button to continue installation.



7. If the Hardware Update Wizard finishes without a problem, the following dialog appears. Click the [Finish] button to close the wizard.



## 6.3 Installing the IS-NITRO-CAPTURE Software

---

Install the IS-NITRO-CAPTURE software on the computer. Follow the instructions below.

1. Log into Windows using an administrator account.
2. Terminate all running programs.
3. If you haven't yet downloaded the installation file from [www.warioworld.com](http://www.warioworld.com), do so at this time.
4. Use Windows Explorer to locate the installation file.
5. Double click on IS-NITRO-CAPTURE-~~xxx~~.EXE (~~xxx~~ being the version number) to run the install program.
6. Follow the instructions in the message that appears.
7. If the install program finishes successfully, installation is complete. If you are asked to restart the computer after installation is completed, restart the computer.

## 6.4 Uninstalling the IS-NITRO-CAPTURE Software

---

Follow the procedure below to uninstall the IS-NITRO-CAPTURE software from your computer.

1. Log on to Windows as a user with an administrator account.
2. If the IS-NITRO-CAPTURE software is running, exit the IS-NITRO-CAPTURE software.
3. Go to the Windows Control Panel and click on "Add/Remove Programs". The "Add/Remove Programs" dialog will appear. (In Windows 2000, click on "Add/Remove Applications". The "Add/Remove Applications" dialog will appear.)
4. Select [IS-NITRO-CAPTURE] from the list of installed programs.
5. Click the [Remove] button to start the removal of the IS-NITRO-CAPTURE software. If the removal process finishes without any errors, then the IS-NITRO-CAPTURE software has been removed.

The uninstall process will not delete option settings or window position data. If you uninstall and then install an upgraded version of the IS-NITRO-CAPTURE software, the previous information can be used. If you want to delete this information, confirm that the IS-NITRO-CAPTURE software is not running, and use the registry editor to delete the following key and everything below it.

1. Back up the registry files.
2. Provide system recovery points, as described by the Windows XP documentation.
3. Ensure that the IS-NITRO-CAPTURE is not running.
4. Enter the command indicated below into the registry editor:

HKEY\_CURRENT\_USER\Software\INTELLIGENT SYSTEMS\IS-NITRO-CAPTURE

## 6.5 Video and Audio Output

---

When outputting video and audio from the LCD screen to a TV or video device, use the audio/video connectors on the rear panel of IS-NITRO-CAPTURE. Use any of the following optional Video cables sold by Nintendo for these connections.

- Mono AV Cable
- Stereo AV Cable
- S-Video Cable

The output of Audiovisual output connectors AVOUT1 & AVOUT2 can be configured using Dip Switches 6 – 8 on the Rear Panel of the IS-NITRO-CAPTURE. Turn off power switch before changing Dip Switch settings.

Switch 6: Used to set the border color on the outside of the LCD screen, on images output by the Stereo AV Cable. Set to OFF for black and ON for gray.

Switch 7: When set to ON, the DS Upper Screen and Lower Screen are output as a single image from AVOUT1. When set to OFF, the upper screen is output from AVOUT1.

Switch 8: When set to ON, the DS upper and lower screens are output as a single image from AVOUT2. When set to OFF, the lower screen is output from AVOUT2..

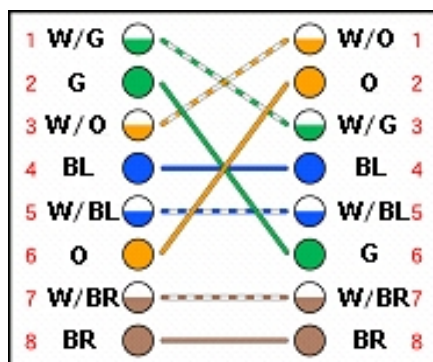
The output images use the NTSC non-interlaced format when each screen is output as a single image. The output images use the NTSC interlaced format when two screens are output as a single image. The PAL format is not supported.

## 6.6 Performing DS Wireless Communication Using Wires

---

The IS-NITRO-CAPTURE device comes standard with the ability to perform DS Wireless Communication using wired networking. Use a category 5 cross LAN cable that is no longer than 16 feet (5 meters). (It should meet 10BASE-T and 100BASE-T standards (TIA/EIA-568A, IEEE802.3i).)

Use the following procedure to connect two IS-NITRO-CAPTURE units (including IS-NITRO-EMULATOR and IS-NITRO-VIDEO units).



1. Make sure the power switches on the IS-NITRO-CAPTURE units are set to OFF.
2. Set DIP switch #5 on the IS-NITRO-CAPTURE units to OFF.
3. Connect the two IS-NITRO-CAPTURE units with the communication cable.
4. Simultaneously, set the power switches of the IS-NITRO-CAPTURE units to ON.

You can connect several IS-NITRO-CAPTURE units (including IS-NITRO-EMULATOR and IS-NITRO-VIDEO units) using an IS-NITRO-HUB.

1. Make sure the power switches on the IS-NITRO-CAPTURE units and IS-NITRO-HUB unit are set to OFF.
2. Set DIP switch #5 on the IS-NITRO-CAPTURE units to OFF.
3. Connect the IS-NITRO- CAPTURE units to the IS-NITRO-HUB unit with the communication cables.
4. Set the power switch for the IS-NITRO-HUB unit to ON.
5. Set the power switches on the IS-NITRO-CAPTURE units to ON.

Please note the following constraints when using DS Wireless Communication over a wire.

- Communication is possible even when different channels are used.
- Signal strength data will not be correct.

## 6.7 Performing DS Wireless Communication Without Wires

---

If you purchase the wireless option, you can perform DS Wireless Communication without wires.

1. Make sure the power switch on the IS-NITRO-CAPTURE unit is set to OFF.
2. Set DIP switch #5 on the IS-NITRO-CAPTURE unit to ON.
3. Set the power switch on the IS-NITRO-CAPTURE unit to ON.

Note that because the structure of the IS-NITRO-CAPTURE unit is different from that of the Nintendo DS, they can have slightly different wireless characteristics (orientation, range etc.).

## 7 Startup and Shutdown

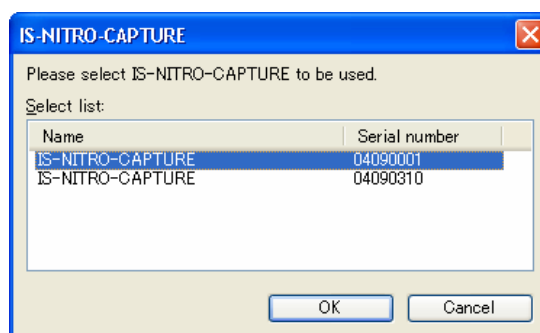
### 7.1 Starting up IS-NITRO-CAPTURE

To start the IS-NITRO-CAPTURE software, click the [Start] button, then [All programs] ([Programs] in Windows 2000) , [IS-NITRO-CAPTURE] and [IS-NITRO-CAPTURE].

You may be required to select which IS-NITRO-CAPTURE device to use (only if more than one working IS-NITRO-CAPTURE device is detected), at which point the versions of the IS-NITRO-CAPTURE software and the IS-NITRO-CAPTURE device firmware are compared.

### 7.2 IS-NITRO-CAPTURE Device Selection

If only one usable IS-NITRO-CAPTURE device is found when the IS-NITRO-CAPTURE software starts, the software will opens immediately. When more than one working device is found, the [IS-NITRO-CAPTURE Hardware selection] Dialog appears and you must select the IS-NITRO-CAPTURE device you want to use.



This dialog displays the serial numbers of all detected devices. (The serial number is shown on the sticker on the bottom of the IS-NITRO-CAPTURE device.) Select the device you want to use and click the [OK] button. The software will launch using the selected device.

## 7.3 Updating the Firmware

---

When the IS-NITRO-CAPTURE software starts, it checks the IS-NITRO-CAPTURE software version and the IS-NITRO-CAPTURE device firmware version. If the versions do not match a message will prompt you to take appropriate action.

**IS-NITRO-CAPTURE firmware must be updated to operate with this software version.**

**Please read the following cautions.**

- \* **Exit all applications other than IS-NITRO-CAPTURE.**
- \* **Do not operate IS-NITRO-CAPTURE while updating its firmware. This requires about 20 seconds.**
- \* **If you encounter a problem, such as the device is not recognized as a USB device after failing the update process, please read the user's manual.**

**After you understand the above conditions, please click the Update button.**

This indicates that the IS-NITRO-CAPTURE device's firmware version is older than the IS-NITRO-CAPTURE software version.

This may appear when you update the IS-NITRO-CAPTURE software. If it appears, click on the [Update] button to update the IS-NITRO-CAPTURE device's firmware.

**While the firmware is being updated, do not set the power switch of the IS-NITRO-CAPTURE device to OFF, reset the computer, or perform any other operations with the IS-NITRO-CAPTURE device or the computer.**

If this dialog box closes and the IS-NITRO-CAPTURE software starts properly, the upgrade has succeeded. In this case you will be able to immediately use the IS-NITRO-CAPTURE software. If the IS-NITRO-CAPTURE software does not start properly, it is possible that updating the IS-NITRO-CAPTURE device's firmware failed. In this case, refer to [Restoring Firmware] and try to restore the IS-NITRO-CAPTURE device's firmware.

Notice that if you click on [Do not Update], the software will start without updating the firmware. However, you will not be able to use the software.

**You are using software that is not supported by the IS-NITRO-CAPTURE firmware.**

- **A previous version of the firmware cannot be installed.**
- **Please download the latest version of the software from <http://www.warioworld.com/>.**

This indicates that the IS-NITRO-CAPTURE device's firmware version is newer than the IS-NITRO-CAPTURE software version.

If this message appears you will not be able to use the IS-NITRO-CAPTURE software. Either use a new version of the IS-NITRO-CAPTURE software or restore firmware.

If the IS-NITRO-CAPTURE device's firmware version and the IS-NITRO-CAPTURE software version are the same, these messages will not display and the program will immediately start.



## 7.4 Restoring the Firmware

---

If you attempt to update the firmware in the IS-NITRO-CAPTURE hardware and fail, you could damage the firmware. If you then attempt to use the hardware, it may fail to be recognized as a USB device or malfunction in some other manner. If the firmware should fail to update properly, you should restore it to its original condition by performing the following procedure.

1. Turn OFF the power switch on the IS-NITRO-CAPTURE hardware.
2. Turn ON dip switch number 4 (on the rear panel).
3. Turn ON the power switch.
4. **Wait for the system LED [SYSTEM1] on the front panel to turn OFF, then turn OFF the power switch on the hardware.**
5. Turn OFF dip switch number 4.

If you perform the above operation and the hardware still does not function correctly, repairs to the hardware are necessary. In this case, contact [support@noa.com](mailto:support@noa.com) before attempting to use IS-NITRO-CAPTURE.

## 7.5 Closing the IS-NITRO-CAPTURE Application

---

To exit the IS-NITRO-CAPTURE software, perform one of the following operations.

1. Select [Exit] from the [File] menu.
  2. Click on the title bar icon and select [Close] from the menu that opens.
  3. Double click on the title bar icon.
  4. Click the close button on the title bar.
  5. Hold down the Alt key and press F4.
- Even after the software is closed, user programs being executed will continue to run.

## 8 Operating Procedure

Operation of IS-NITRO-CAPTURE is described below.

### 8.1 Capturing an Image

---

IS-NITRO-CAPTURE captures screen images and saves them to a file. See "IS-NITRO-CAPTURE Help" for instructions on how to do this.

### 8.2 Starting a Game

---

Follow the procedure below to start a game.

1. First, make sure that the power switch of the IS-NITRO-CAPTURE is in the OFF position.
2. Insert a DS Card or a GBA Game Pak. With the DS Card in a vertical position, insert it into the slot with the label facing to the right. You will feel a slight click when it has been properly inserted. With the GBA Game Pak in a vertical position, insert it into the slot with the label facing to the right.
3. Change the power switch of the IS-NITRO-CAPTURE to the ON position.

### 8.3 Ending a Game

---

When ending a game, follow the procedure below.

1. Change the power switch of the IS-NITRO-CAPTURE to the OFF position.
2. Remove the DS Card or the GBA Game Pak from its slot. The DS Card can be removed from the slot by pushing down lightly on the DS Card. The DS Card should spring up slightly. Grab the DS Card by the edge and remove it. Remove the GBA Game Pak by pulling it directly out of the slot.

### 8.4 Resetting a Game

---

To reset in the middle of a game, hold down the reset button (POWER) on the controller for at least one second. The game can be started from the same state as when turning on the power switch.

## 9 Specifications

The specifications of the IS-NITRO-CAPTURE are as follows:

Item	Specification
Name	IS-NITRO-CAPTURE Device
Main Memory	4MB
Video Output	NTSC Non-interlaced (when each screen is output as a single image) NTSC interlaced (when two screens are output as a single image)
Connectors	USB Connector (series B) A/V Output Connectors (2) Wireless Connector DC Connector Ground Connector
Slots	DS Game Card Slot AGB Game Pak Slot
Power Source	DC12V 3.25A (Nintendo GameCube AC Adapter)
Operating Environment	10° – 40°C (No condensation)
External Dimensions	Width: 3" (80 mm) x Height: 6" (152 mm) x Depth: 8.5" (212 mm) (Excluding the largest protrusions other than the feet)
Weight	Approximately 4.5 lbs (2.1 kg) (including the controller)

The controller specifications are as follows:

Item	Specification
Name	Controller
Operating Environment	10° – 40°C (No condensation)
External Dimensions	Width: 6" (148.7 mm) x Height: 1" (28.9 mm) x Depth: 3" (84.7 mm) (When folded)
Cable Length	Approximately 20" (50 cm)

## 10 Support

To provide support to users of IS-NITRO-CAPTURE, Nintendo has a website and e-mail support.

- **Website**

Information and documents regarding IS-NITRO-CAPTURE and the latest software versions are available on the Nintendo Software Development Support Group website (<http://www.warioworld.com>). Only those registered in the NINTENDO DS group of the website can gain access to download the latest versions. Register online at (<http://www.warioworld.com>).

- **E-mail Support**

For questions and comments about IS-NITRO-CAPTURE, please contact the Software Development Support Group at [support@noa.com](mailto:support@noa.com).

Intelligent Systems Co., Ltd.

Copyright © 2004 INTELLIGENT SYSTEMS Co., Ltd. All rights reserved.

- This product is copyrighted by Intelligent Systems Co., Ltd.
- The specifications of this device and the contents of this manual are subject to change in the future without prior notification.
- Copying or reproducing this manual in whole or in part in any way without the consent of Intelligent Systems Co., Ltd. is expressly forbidden.
- Please be aware that Intelligent Systems Co., Ltd. is not responsible for anything resulting from the use of this product.
- This product can only be used under the terms of the licensing agreement.
- Nintendo DS and Game Boy Advance are trademarks and registered trademarks of Nintendo, Inc.
- IS-NITRO-CAPTURE, IS-NITRO-DEBUGGER, IS-NITRO-EMULATOR, IS-NITRO-HUB, IS-NITRO-UIC, IS-NITRO-VIDEO and IS-NITRO-WRITER are trademarks of Intelligent Systems Co., Ltd.
- All other company names and product names contained herein are trademarks and registered trademarks of their respective companies.

Copyright © 2004, 2005 Nintendo of America Inc.

Microsoft, Windows, and Internet Explorer are registered trademarks of Microsoft Corporation in the USA and other countries.

IBM and IBM PC/AT are registered trademarks of IBM Corporation.

Nintendo DS, NINTENDO DS, Game Boy Advance, GAMEBOY ADVANCE, Nintendo GameCube, NINTENDO GAMECUBE are trademarks or registered trademarks of Nintendo Co. Ltd. / Nintendo of America Inc.

IS-NITRO-CAPTURE, IS-NITRO-DEBUGGER, IS-NITRO-EMULATOR, IS-NITRO-HUB, IS-NITRO-UIC, IS-NITRO-VIDEO, and IS-NITRO-WRITER are registered trademarks of Intelligent Systems Co, Ltd.

All other company and product names included in this document are registered trademarks of their respective companies.

© 2004, 2005 Nintendo

The contents of this document cannot be duplicated, copied, reprinted, transferred, distributed or loaned in whole or in part without the prior approval of Nintendo.